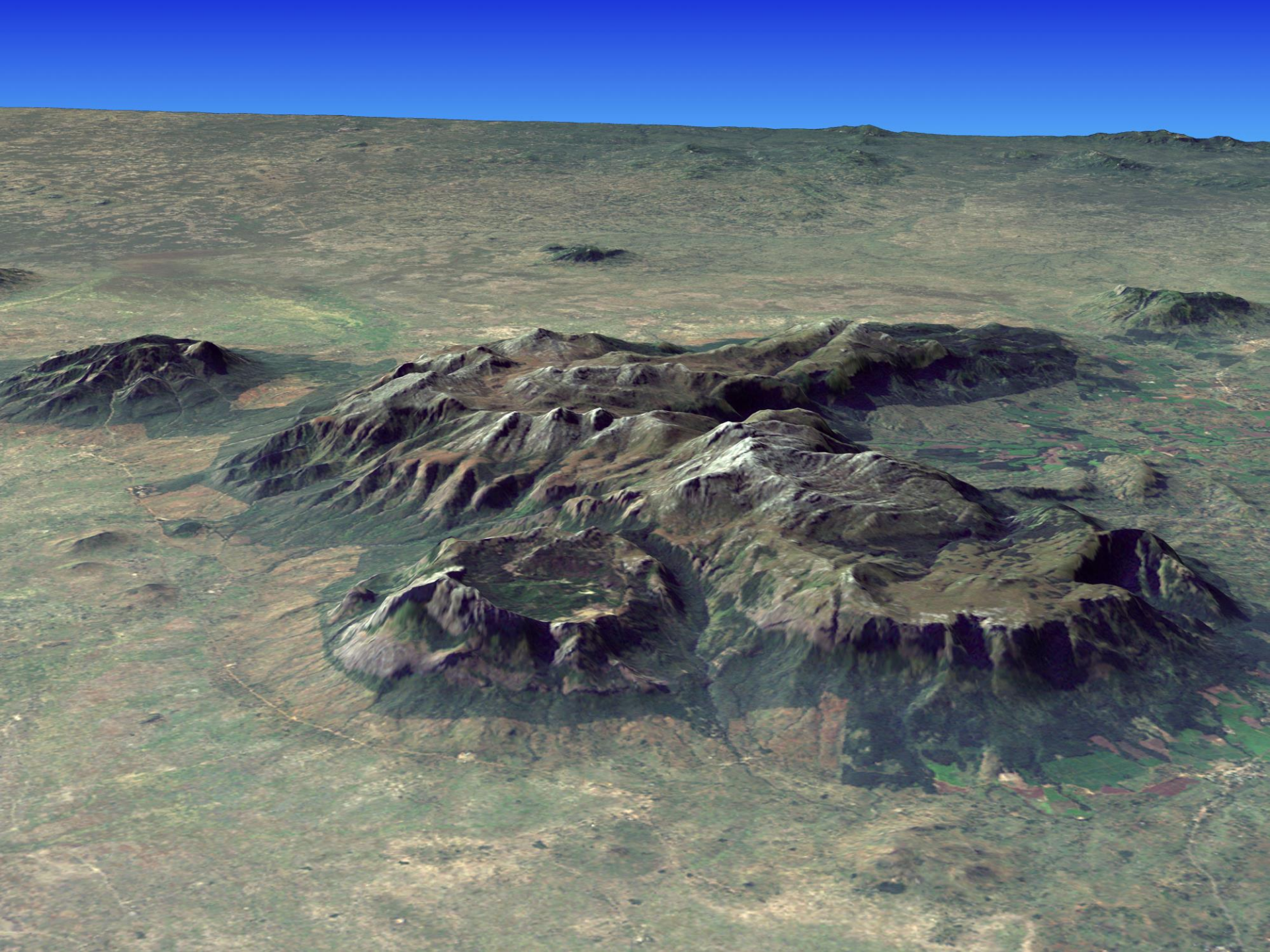


**Potential transboundary cooperation
Mozambique - Malawi
for
conservation & livelihood improvements**

**Carl Bruessow - Director
Mulanje Mountain Conservation Trust**

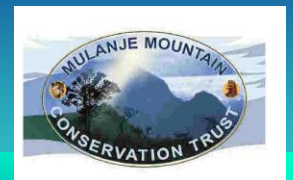






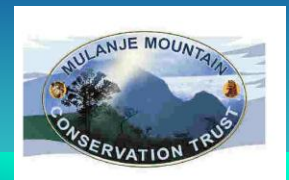
Mount Mulanje

- Highest mountain in south-east Africa
- Forest Reserve managed by Dept of Forestry
- UN Global Biosphere Reserve since 2000
- Key Biodiversity Area (Priority One)
- 200-300 endemic plant & animal species
- Highest rainfall in the region (3,000mm - 5,000mm)
- Important water, energy & tourism resource
- 250,000 people living within 10km radius



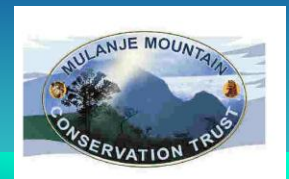
MMCT

- Established 2002 – 15 years experience
- DfID & World Bank / Global Environment Facility
- Endowment-based conservation organisation
- Governance represents key local/national agencies
- Work with many partners & donors
- Supports MMFR biodiversity & resource use
- Assists capacity of Mt Mulanje stakeholders



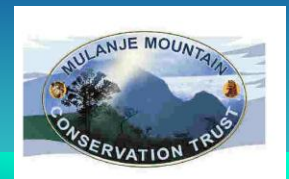
Cooperation To-date

- Darwin Initiative facilitation for ecological research of Mts Chipirone, Mabu, Namuli & Serra Tumbine.
- UNESCO Biosphere Reserve cooperation.
- Collaborated with Justico Ambientale & FFI on livelihoods activities learning visits.
- Low-cost cookstove-making training
- Assisted the Legado Initiative on Mt Namuli.
- Collaboration with Espanor in Milange.
- Football competition sponsorship.



Technical exchange

- Conservation and catchment management.
- Ecology and biodiversity research.
- Community group capacity building.
- Community livelihood improvement:
 - irrigation, water supply, fish-farming
 - agriculture diversification & intensification
 - beekeeping, fruit trees, tourism businesses
 - electricity supply & biomass-efficient cookstoves
- Certification, carbon trade & PES.



Basis for Cooperation

- Mt Mulanje & Lake Chilwa lie across the border
- UN Global Biosphere Reserve zoning
- Serra Tumbine outlier of Mt Mulanje
- Similar cultural context (Yao & Lomwe)
- Eco-system approach to conservation – many endemic species on the mountains
- Cross-border resource use & similar issues
- Ease of collaboration - road & telecommunications

