



## PAMBuoy data demonstration

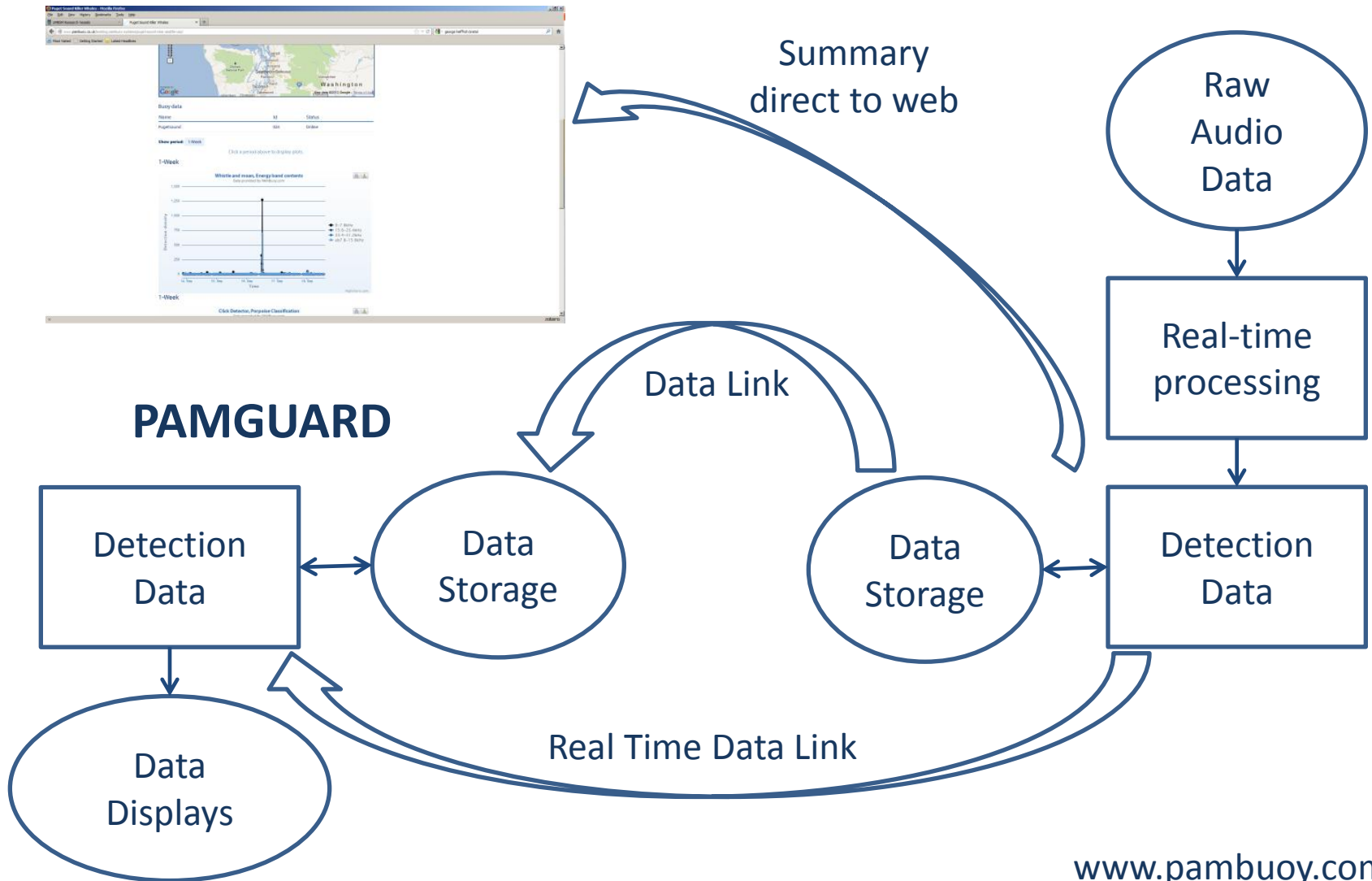
Cormac Booth

Doug Gillespie

27th September 2012



# Data Delivery



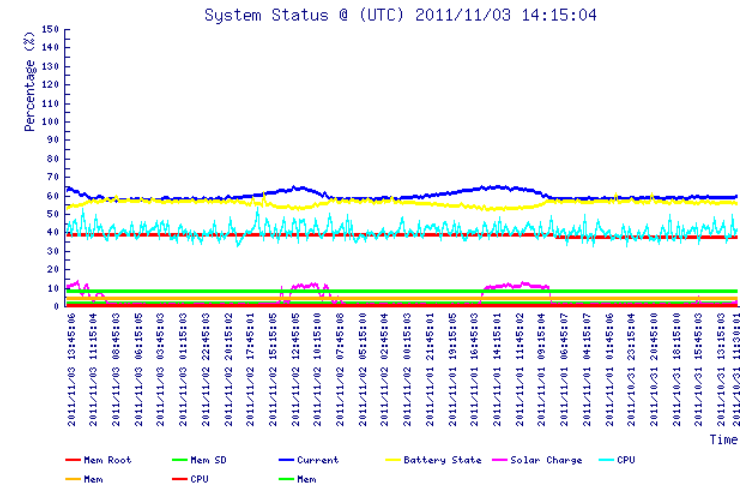
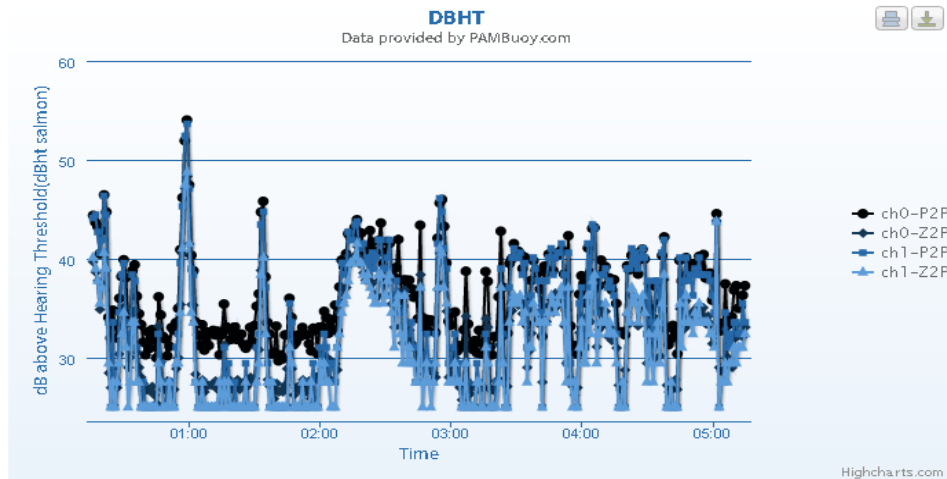
## Device Status and Detection data at:

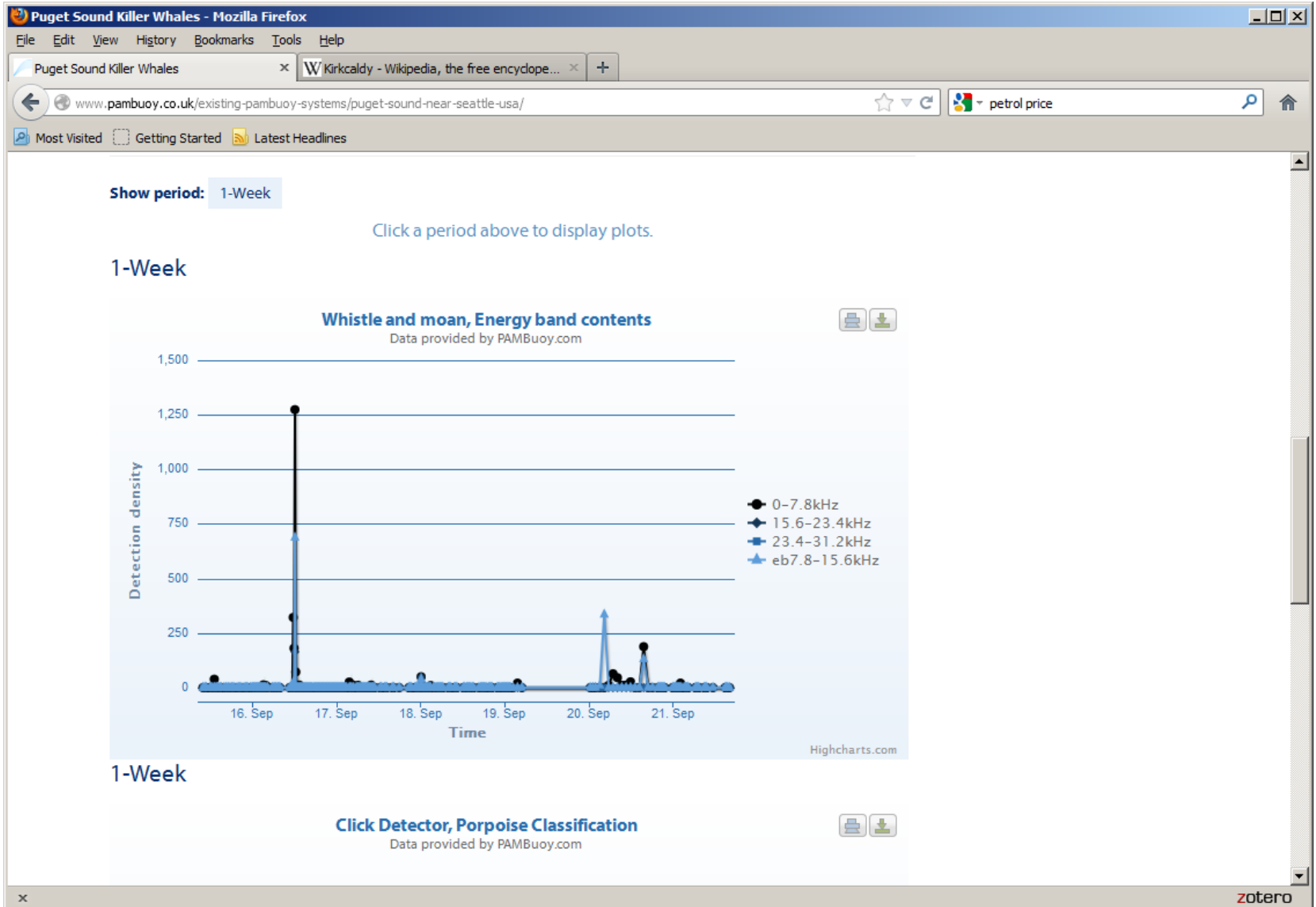
[www.pambuoy.com](http://www.pambuoy.com)

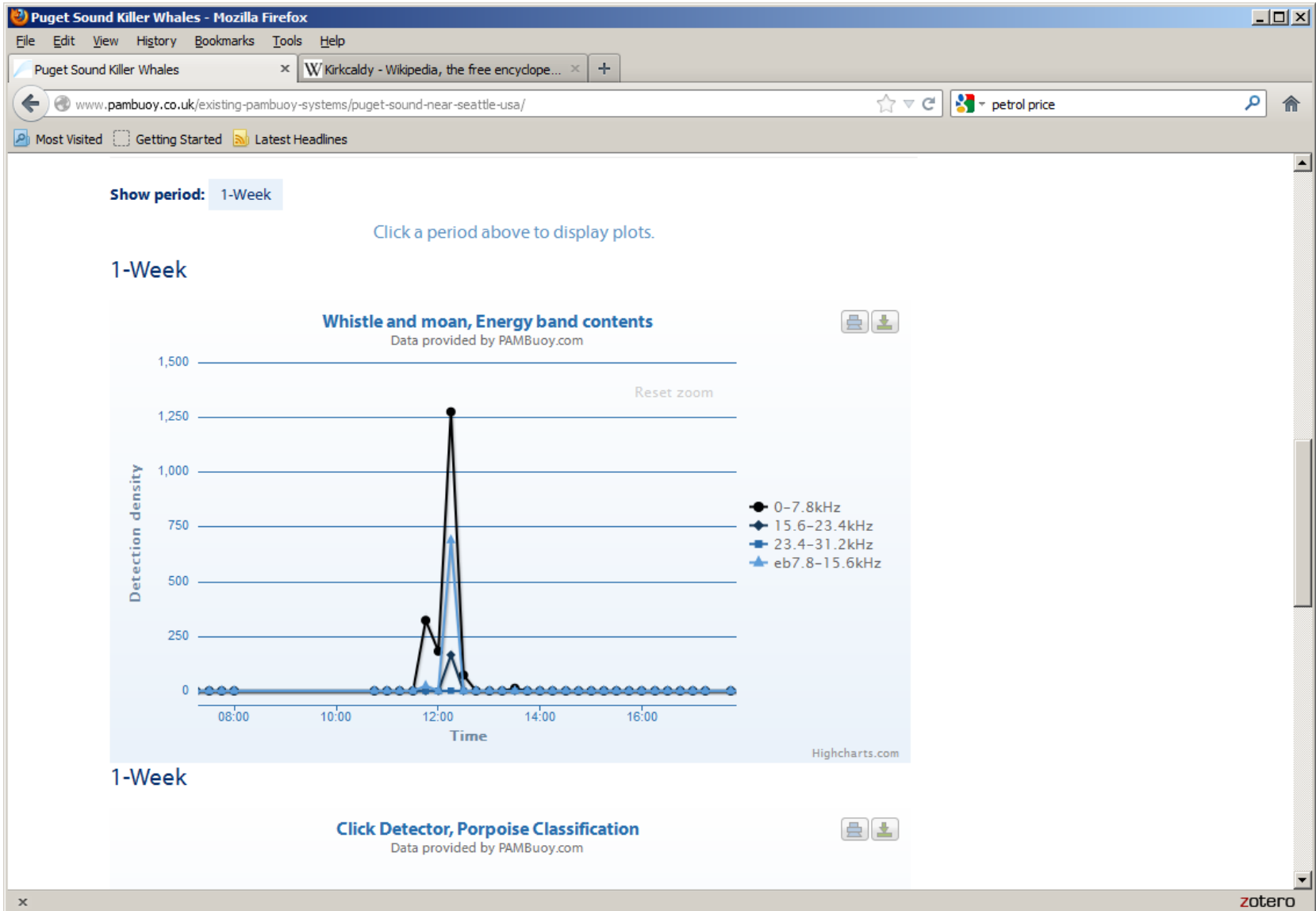
- Real time device status
- Summary of essential data
  - Click and whistle counts
  - Noise measurements

### Buoy summary plots

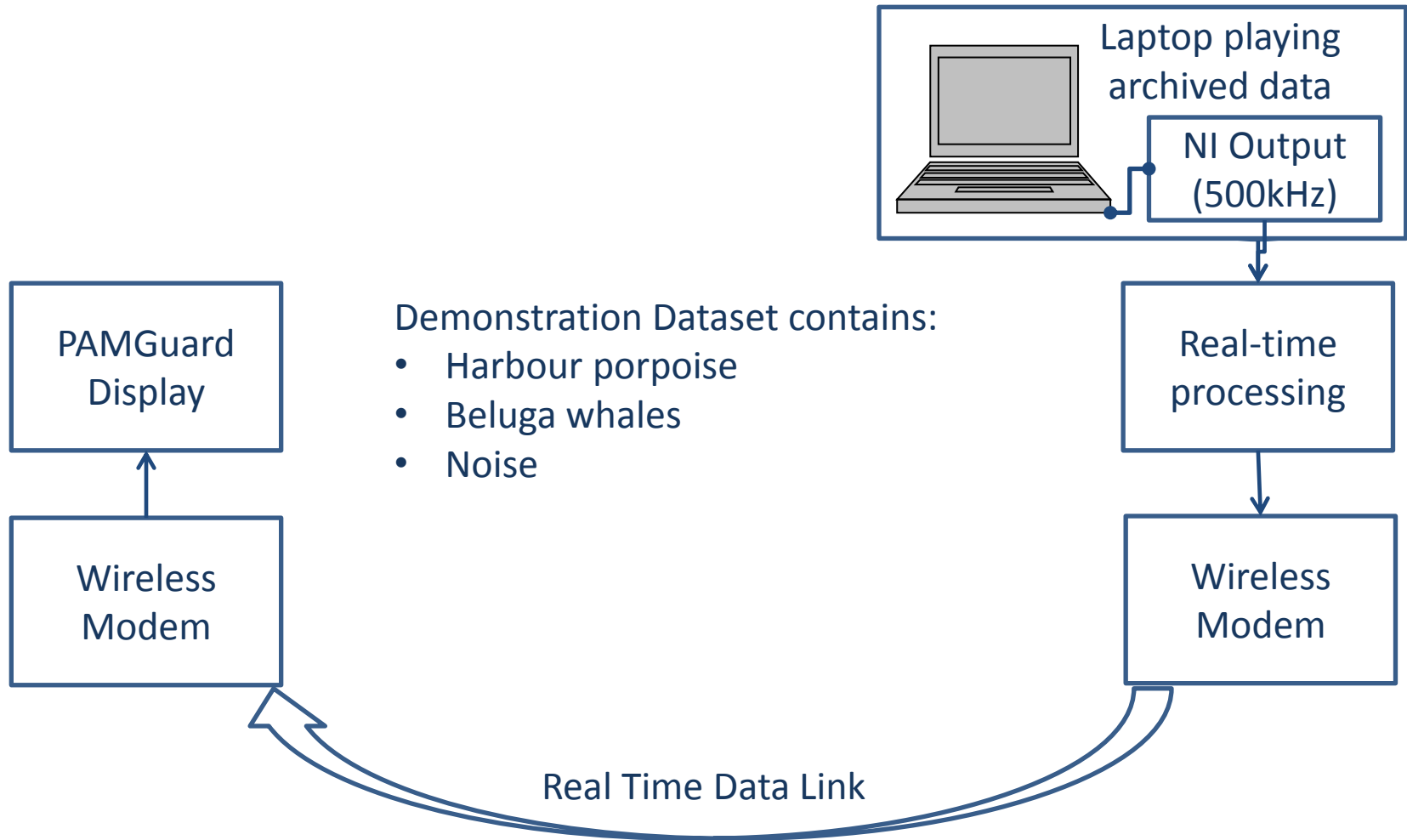
Show period: **1-Week**



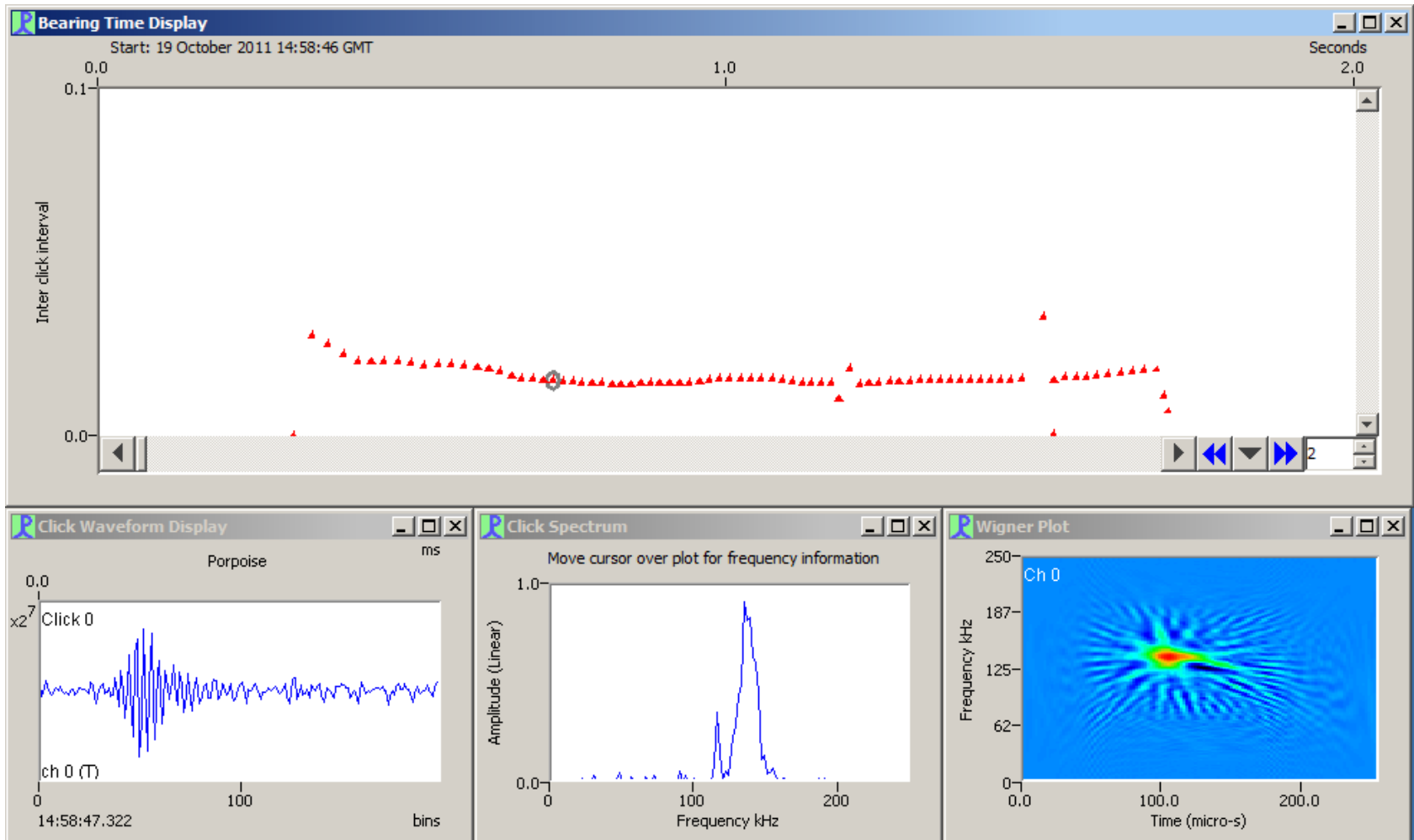




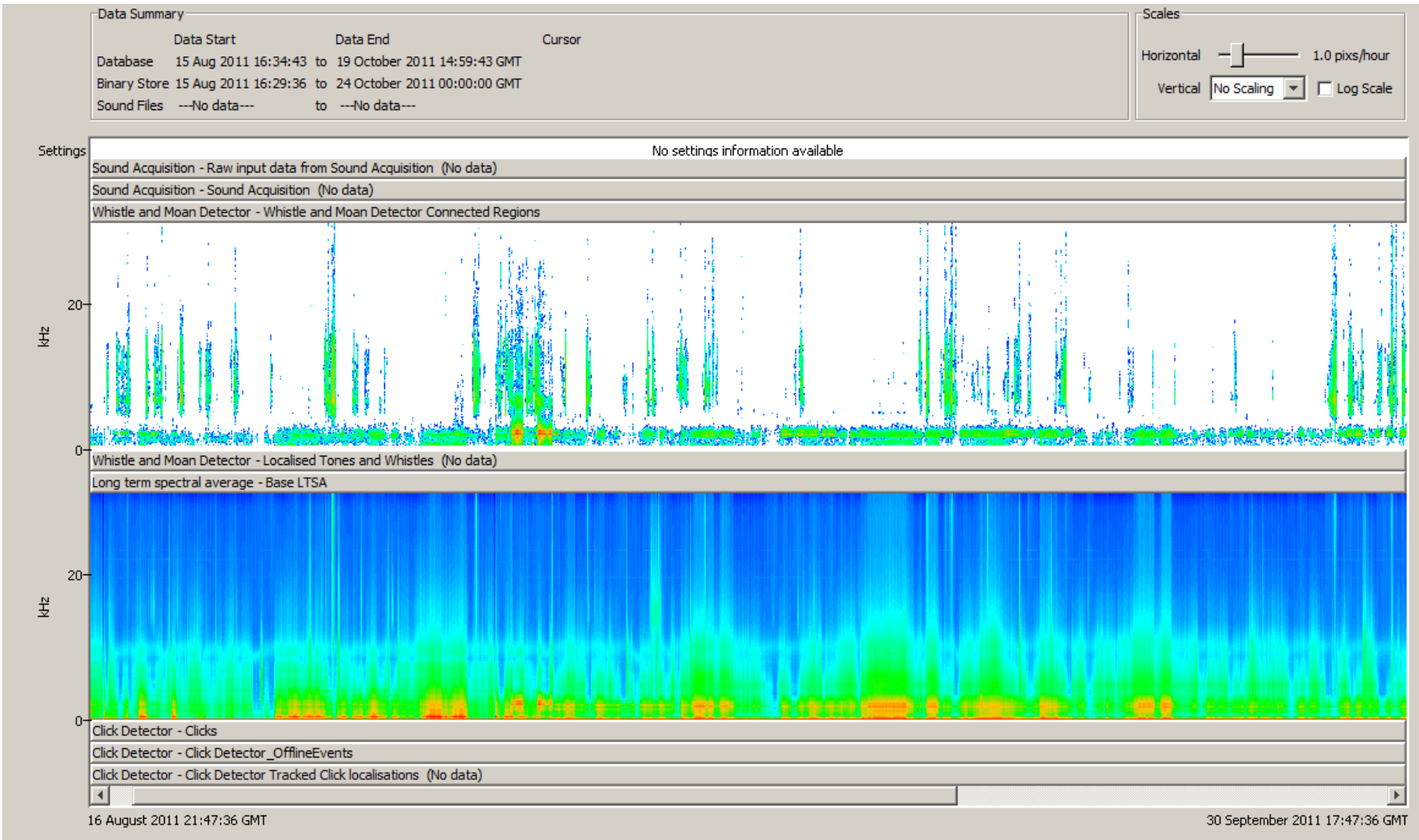
# Real time (mitigation mode)



Need to be able to view data on time scales of seconds.



# Offline Data Visualisation



And Days / weeks / Months / Years...



- Flexible platform for simultaneous detection of multiple sound types
  - Clicks
  - Whistles
  - Low frequency moans
  - Noise Measurements
- Massive data compression and transmission to shore means the memory won't fill up even when processing 10's of gigabytes per day.
- Three data delivery options:
  - Wireless modem – real time to local base station (1 – 2 seconds)
  - WWW – near real time (typ' 15 minutes delay)
  - Data archive – next day
- Flexible PAMGuard based data viewing software used for offline analysis
  - Fully open source code and file formats for returned binary data.

---

[www.pambuoy.com](http://www.pambuoy.com)

PAMBuoy®: A revolution in marine mammal monitoring

