

THE MAPUTO BAY ECOSYSTEM

Editors Salomão Bandeira | José Paula



Book title:

The Maputo Bay Ecosystem.

Editors:

Salomão Bandeira
José Paula

Assistant Editor:

Célia Macamo

Book citation:

Bandeira, S. and Paula, J. (eds.). 2014. *The Maputo Bay Ecosystem*.
WIOMSA, Zanzibar Town, 427 pp.

Chapter citation example:

Schleyer, M. and Pereira, M., 2014. Coral Reefs of Maputo Bay.
In: Bandeira, S. and Paula, J. (eds.), *The Maputo Bay Ecosystem*.
WIOMSA, Zanzibar Town, pp. 187-206.

ISBN: 978-9987-9559-3-0

© 2014 by Western Indian Ocean Marine Science Association
(WIOMSA)

Mizingani Street, House No. 13644/10

P.O. Box 3298, Zanzibar, Tanzania.

Website: www.wiomsa.org

E-mail: secretary@wiomsa.org

All rights of this publication are reserved to WIOMSA, editors and authors of the respective chapters. No part of this publication may be reproduced, stored in a retrieval system, or transmitted in any form or by any means, electronic, mechanical, photocopying, recording or otherwise, without the prior permission of the editors and WIOMSA. The material can be used for scientific, educational and informational purposes with the previous permission of the editors and WIOMSA.

This publication is made possible by the generous support of Sida (Swedish International Development Cooperation Agency) through the Western Indian Ocean Marine Science Association (WIOMSA). The contents do not necessarily reflect the views of Sida.

Design: Marco Nunes Correia | designer of communication and scientific illustrator | marconunescorreia@gmail.com

Photographers: credits referred in respective legends.

Printed by: Guide – Artes Gráficas, Lda. (www.guide.pt)

Printed in Portugal

TABLE OF CONTENTS

Foreword by the Rector of UEM

Foreword by the President of WIOMSA

Acknowledgements

List of contributors

PART I

ENVIRONMENTAL AND HUMAN SETTING	1
Chapter 1. AN INTRODUCTION TO THE MAPUTO BAY	3
<i>José Paula and Salomão Bandeira</i>	
Chapter 2. GEOGRAPHICAL AND SOCIO-ECONOMIC SETTING OF MAPUTO BAY	11
<i>Armindo da Silva and José Rafael</i>	
Case Study 2.1. Maputo Bay's coastal habitats	21
<i>Maria Adelaide Ferreira and Salomão Bandeira</i>	
Case Study 2.2. Main economic evaluation of Maputo Bay	25
<i>Simião Nhabinde, Vera Julien and Carlos Bento</i>	
Chapter 3. GEOMORPHOLOGY AND EVOLUTION OF MAPUTO BAY	31
<i>Mussa Achimo, João Alberto Mugabe, Fátima Momade and Sylvi Haldorsen</i>	
Case Study 3.1. Erosion in Maputo Bay	39
<i>Elídio A. Massuanganhe</i>	
Chapter 4. HYDROLOGY AND CIRCULATION OF MAPUTO BAY	45
<i>Sinibaldo Canhanga and João Miguel Dias</i>	
Case Study 4.1. Maputo Bay offshore circulation	55
<i>Johan R.E. Lutjeharms† and Michael Roberts</i>	
Case Study 4.2. Ground water flow in/into Maputo Bay	61
<i>Dinis Juízo</i>	
Chapter 5. HUMAN SETTINGS IN MAPUTO BAY	67
<i>Yussuf Adam, Júlio Machele and Omar Saranga</i>	

Chapter 6. INHACA ISLAND: THE CRADLE OF MARINE RESEARCH IN MAPUTO BAY AND MOZAMBIQUE	87
<i>Salomão Bandeira, Lars Hernroth and Vando da Silva</i>	
Case Study 6.1. The role of SIDA/SAREC on research development in Maputo Bay during the period 1983-2010	99
<i>Almeida Guissamulo and Salomão Bandeira</i>	
Case Study 6.2. Inhaca and Portuguese islands reserves and their history	101
<i>Salomão Bandeira, Tomás Muacanhia, Olavo Deniasse and Gabriel Albano</i>	
PART II	
MAIN HABITATS AND ECOLOGICAL FUNCTIONING	107
Chapter 7. MANGROVES OF MAPUTO BAY	109
<i>José Paula, Célia Macamo and Salomão Bandeira</i>	
Case Study 7.1. Incomati mangrove deforestation	127
<i>Celia Macamo, Henriques Baliddy and Salomão Bandeira</i>	
Case Study 7.2. Saco da Inhaca mangrove vegetation mapping and change detection using very high resolution satellite imagery and historic aerial photography	131
<i>Griet Neukermans and Nico Koedam</i>	
Case Study 7.3. The mud crab <i>Scylla serrata</i> (Forskål) in Maputo Bay, Mozambique	135
<i>Adriano Macia, Paula Santana Afonso, José Paula and Rui Paula e Silva</i>	
Case Study 7.4. Crab recruitment in mangroves of Maputo Bay	141
<i>José Paula and Henrique Queiroga</i>	
Chapter 8. SEAGRASS MEADOWS IN MAPUTO BAY	147
<i>Salomão Bandeira, Martin Gullström, Henriques Balidy, Davide Samussone and Damboia Cossa</i>	
Case Study 8.1. <i>Zostera capensis</i> – a vulnerable seagrass species	171
<i>Salomão Bandeira</i>	
Case Study 8.2. <i>Thalassodendron leptocaula</i> – a new species of seagrass from rocky habitats	175
<i>Maria Cristina Duarte, Salomão Bandeira and Maria Romeiras</i>	
Case Study 8.3. Morphological and physiological plasticity of the seagrass <i>Halodule uninervis</i> at Inhaca Island, Mozambique	181
<i>Meredith Muth and Salomão Bandeira</i>	
Chapter 9. CORAL REEFS OF MAPUTO BAY	187
<i>Michael Schleyer and Marcos Pereira</i>	

Case Study 9.1. Shrimps in coral reefs and other habitats in the surrounding waters of Inhaca Island <i>Matz Berggren</i>	207
Chapter 10. MARINE MAMMALS AND OTHER MARINE MEGAFUNA OF MAPUTO BAY <i>Almeida Guissamulo</i>	215
Case Study 10.1. Seagrass grazing by dugongs: Can habitat conservation help protect the dugong? <i>Stela Fernando, Salomão Bandeira and Almeida Guissamulo</i>	223
Chapter 11. MARINE TURTLES IN MAPUTO BAY AND SURROUNDINGS <i>Cristina Louro</i>	229
Chapter 12. THE TERRESTRIAL ENVIRONMENT ADJACENT TO MAPUTO BAY <i>Salomão Bandeira, Annae Senkoro, Filomena Barbosa, Dalmiro Mualassace and Estrela Figueiredo</i>	239
Case Study 12.1. Inhaca Island within Maputaland centre of endemism <i>Annae Senkoro, Filomena Barbosa and Salomão Bandeira</i>	255
Case Study 12.2. Uses of plant species from Inhaca Island <i>Filomena Barbosa, Annae Senkoro and Salomão Bandeira</i>	259
Case Study 12.3. The avifauna of Maputo Bay <i>Carlos Bento</i>	265
PART III	
FISHERIES OF MAPUTO BAY	275
Chapter 13. SHALLOW-WATER SHRIMP FISHERIES IN MAPUTO BAY <i>Rui Paula e Silva and Zainabo Masquine</i>	277
Case Study 13.1. Influence of the precipitation and river runoff on the semi-industrial shrimp catches in Maputo Bay <i>Carlos Bacaimane and Rui Paula e Silva</i>	285
Case Study 13.2. Influence of estuarine flow rates on the artisanal shrimp catches in Maputo Bay <i>Sónia Nordez</i>	287
Case Study 13.3. Distribution and abundance of the shrimp <i>Fenneropenaeus indicus</i> in Maputo Bay <i>António Pegado and Zainabo Masquine</i>	289
Case Study 13.4. By-catch in the artisanal and semi-industrial shrimp trawl fisheries in Maputo Bay <i>Vanda Machava, Adriano Macia and Daniela de Abreu</i>	291

Chapter 14. THE MAGUMBA FISHERY OF MAPUTO BAY	297
<i>Paula Santana Afonso and Zainabo Masquine</i>	
Chapter 15. ARTISANAL FISHERIES IN MAPUTO BAY	303
<i>Alice Inácio, Eunice Leong, Kévin Samucidine, Zainabo Masquine and José Paula</i>	
Case Study 15.1. Biology and current status of the <i>Otolithes ruber</i> population in Maputo Bay	321
<i>Alice Inácio</i>	
Case Study 15.2. Aspects of the reproductive biology of saddle grunt (<i>Pomadasys maculatus</i>) and silver sillago (<i>Sillago sihama</i>) in Maputo Bay	325
<i>Isabel Chaúca</i>	
Case Study 15.3. Socio-economic aspects of gastropod and bivalve harvest from seagrass beds – comparison between urban (disturbed) and rural (undisturbed) areas	329
<i>Elisa Inguane Vicente and Salomão Bandeira</i>	
Case Study 15.4. The sea urchin <i>Tripneustes gratilla</i>: insight to an important food resource at Inhaca Island	335
<i>Stela Fernando and Salomão Bandeira</i>	
Case Study 15.5. Recreational and sport fishing in Maputo Bay	341
<i>Marcos Pereira and Rudy Van der Elst</i>	
 PART IV	
CROSS CUTTING ISSUES	345
 Chapter 16. POLLUTION IN MAPUTO BAY	347
<i>Maria Perpétua Scarlet and Salomão Bandeira</i>	
 Case Study 16.1. Aerosols in Maputo Bay	373
<i>António Queface</i>	
Case Study 16.2. Heavy metal contamination of penaeid shrimps from the artisanal and semi-industrial fisheries in Maputo Bay	377
<i>Daniela de Abreu, David Samussone and Maria Perpétua Scarlet</i>	
 Chapter 17. POTENCIAL CLIMATE CHANGE IMPACTS ON MAPUTO BAY	383
<i>Alberto Mavume, Izidine Pinto and Elídio Massuanganhe</i>	
 Chapter 18. MANAGEMENT OF MAPUTO BAY	399
<i>Sérgio Rosendo, Louis Celiens and Micas Mechisso</i>	

Chapter 19. MAPUTO BAY: THE WAY FORWARD

419

José Paula and Salomão Bandeira

9 Coral Reefs of Maputo Bay

Michael Schleyer and Marcos Pereira

Introduction

The first broad narrative of coral reefs in Maputo Bay is provided by Boshoff (1958) in an account of the natural history of Inhaca Island (Macnae and Kalk, 1958). Limited coral reefs were found on the west side of the island, these being located primarily north of the Biological Research Station and within a channel draining the Saco near Ponta Torres (Figure 1). The former, known as Barreira Vermelha, was the largest and appeared to be associated with coral rubble and rock outcrops. It was estimated to be about 2 km long and a maximum of 65 m wide but was shrinking due to sedimentation at the time of publication (1958). The reef in the channel at Ponta Torres was found to be ephemeral close to the point but showed more permanence than Barreira Vermelha in the headwaters of the channel. Here persistent corals grew to a depth of up to 5 m and the coral field was up to 10 m wide. Salm (1976) later confirmed the width of the reef (7-10 m) and estimated its length to be about 1 km, but noted that sedimentation from dune erosion threatened its existence. Boshoff (1958) found further transient coral communities on coral rubble between Ponta Rasa and Ponta Punduini but these were clearly not permanent. Only solitary colonies

occurred elsewhere, for example at Cabo Inhaca in the north. Boshoff (1958) thus correctly concluded that the abundant sandy substrata and sediment dynamics around the island precluded greater coral growth or reef development. Coring undertaken in a later study revealed that reef development has been tenuous, intermittent and dependent on the dynamics of sediment movement along the west coast of Inhaca since the last sea level rise at 6500 BP (Perry, 2005; see also Chapter 3 – Geomorphology and Evolution of Maputo Bay).

There is no other early record of corals in Maputo Bay. A later revision of the Inhaca Island natural history handbook (Kalk, 1995) appears to have been undertaken without further fieldwork and adds no new information on these biota other than mentioning the appearance of another small, transient coral community at Portuguese Island. Boshoff (1958) believed the Inhaca reefs represented the southernmost coral reefs on the East African coast but later discoveries proved this to be untrue. Macnae and Kalk (1958) and Kalk (1995) also provide further information on the most conspicuous echinoderms, molluscs and crustaceans on the reefs, details of which are included in this chapter.

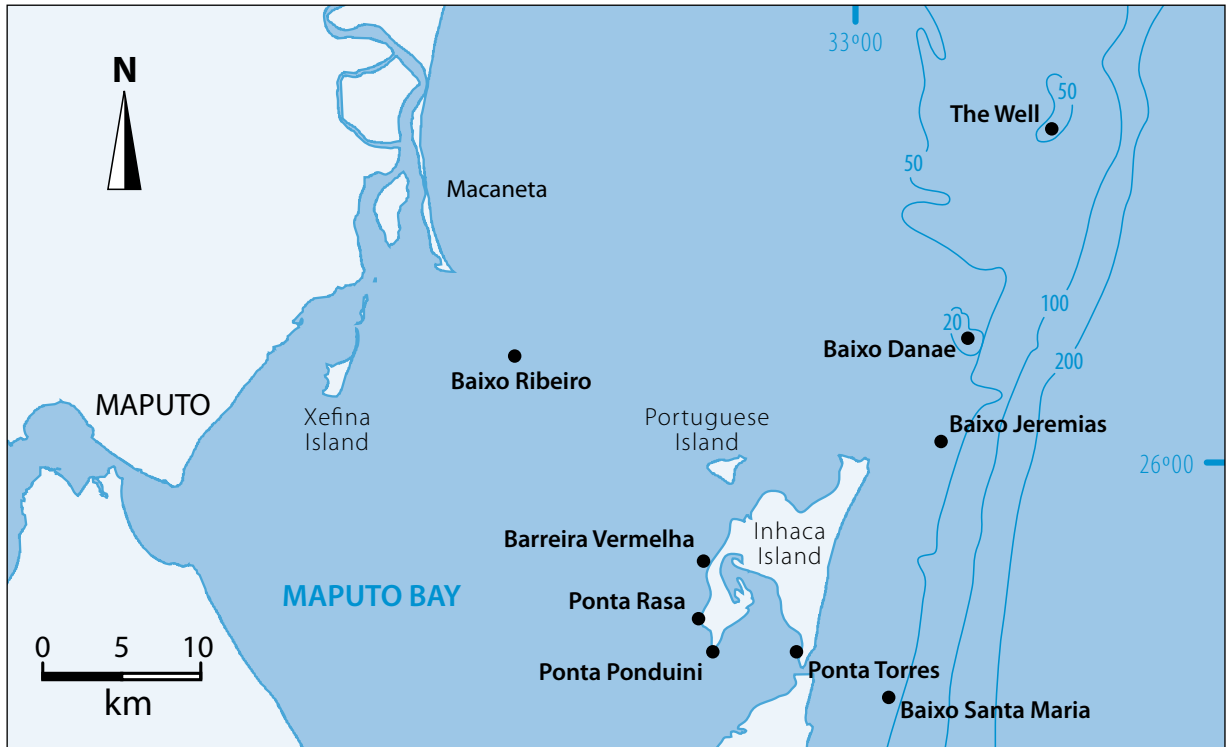


Figure 1. Map of Inhaca Island and Maputo Bay with place names referred to in the text.

Although Inhaca is at the seaward limits of Maputo Bay, it is subjected to high levels of sedimentation and turbidity (see Chapter 2 – Geographical setting of Maputo Bay and Chapter 4 – Hydrology and Circulation of Maputo Bay). It is thus conceivable that corals have always been absent close to the riverine sources of sediment in the Bay. The increase in sedimentation in recent years described in Chapter 3 (Geomorphology and Evolution of Maputo Bay) renders conditions even less conducive to coral development in the Bay. In consequence, the primary focus of this chapter will be on the corals and associated biota on reefs around Inhaca Island.

While Barreira Vermelha and Ponta Torres Reef represent coral communities associated with conditions most typical of Maputo Bay, another large reef is found immediately seaward and NE of its entrance, Baixo Danae (Figure 1). This reef is also influenced by the waters of Maputo Bay and is included for com-

pleteness as it will become evident that, together, the Inhaca coral reefs are unique and quite different from other coral reefs in the southern reaches of East Africa. The only feature that they share in common is that they are not true, accretive reefs that attain massive proportions through the bio-deposition of calcium carbonate. They rather comprise a veneer of coral growth on existing rock formations or coral rubble and are thus better described as coral communities (Barradas, 1965; Ramsay, 1994; 1996; Schleyer, 1995; 2000).

The following account covers the corals, associated benthos and fish communities found on these reefs.

Inhaca coral communities

Boshoff (1958) stated that 137 coral species in 44 genera were found at Inhaca Island, a figure he later revised to 160 species (Boshoff, 1981). However, sys-

tematic revisions of the coral taxa in the region (Riegl, 1995a; 1995b; 1996) necessitate caution in the use of Boshoff's (1958; 1981) earlier works. A list of corals encountered on the Inhaca reefs in more recent surveys (Schleyer *et al.*, 1999; Motta *et al.*, 2002; Costa *et al.*, 2005; Schleyer *et al.*, in prep.) is presented in Table 1. This list is not exhaustive as it is not based on collections but from records derived from photographic surveys. Estimates of percentage cover (Schleyer *et al.*, in prep.) obtained from point intercept analysis of the latter using CPCe software (Kohler and Gill, 2006) are listed for Barreira Vermelha and Baixo Danae in Table 2.

Barreira Vermelha

Barreira Vermelha is located at approximately 26° 1.2'S; 32° 54.2'E and varies in depth from 2-5 m. The reef appears little changed in nature and extent from Boshoff's (1958) description. It has a mixed coral community (Table 1; Figure 2), particularly of tabulate *Acropora* species, a number of sizeable *Porites* bommies, pocilloporids and encrusting corals (*Montipora* and *Echinopora*; Table 2); this in spite of the fact that it is habitually exposed to high turbidity and periodic fluctuations in salinity from river discharges into Maputo Bay. In this regard, its richness of coral life under conditions that would normally discourage coral growth confounds expectations. While not recorded in recent surveys (Table 1), the colourful sea stars, *Linckia laevigata*, *Protoreaster linckii*, are relatively common at Barreira Vermelha.

In terms of condition, evidence of coral bleaching was found on Barreira Vermelha after the severe 1998 El Niño Southern Oscillation (ENSO) that so affected coral reefs throughout the Western Indian Ocean (Schleyer *et al.*, 1999). A consistent reduction in coral cover has been measured in subsequent years (Costa *et al.*, 2005), believed to be attributable not only to deteriorating water conditions but also to destructive fishing practices. The poor condition of

the reef is manifested by the relatively high cover of the zoanthid, *Palythoa*, and the fact that nearly 41.4% of its surface consists of non-living material or a turf of bryozoa and algae (Table 2).

Ponta Torres

Differentiation is necessary between the rather transient and isolated coral colonies growing on the rock wall in the channel at Ponta Torres at 26° 3.9'S; 32° 57.2'E and a richer coral community upstream in the channel at 26° 4.5'S; 32° 57.1'E. The former comprises a sparse cover of *Pocillopora verrucosa*, *Stylophora pistillata* and faviids in a channel that presently drops to a depth of 6 m. Sparseness of the corals appears to be at least partially attributable to turbidity and sand movement caused by the tidal race that fills and drains the Saco Bay. Boshoff (1958) noted the effects of the tidal race and the fact that blasting of the rock wall in 1953 partially obstructed the channel. Sedimentation of the channel ensued, reducing its original depth of 18-25 m and limiting the extent of the reef. ENSO-related bleaching in 1998 appeared to be high in this channel and the only unaffected genera were *Pocillopora*, *Goniopora*, *Goniastrea*, *Astropora* and *Leptoseris* (Schleyer *et al.*, 1999). The long-spined sea urchins *Diadema setosum* and *D. savignyi* attain densities as high as 15-20 individuals.10 m⁻² at Ponta Torres (Pereira *et al.*, 2002), and the cushion star, *Culcita schmideliana*, and quadrangular cucumber, *Stichopus variegates*, have also been found here (Table 3).

The coral community in the channel upstream of Ponta Torres is possibly the most enduring relic of reef development at Inhaca. Boshoff (1958) recorded pure stands of *Pavona*, *Porites* and *Montipora* on this reef and noted that it was subject to more gradual changes than Barreira Vermelha. Photographs taken on this reef in 1967 (Schleyer, unpub. data; Figure 3A) reveal massive *Porites* domes that were already of some age and later also noted by Salm (1976). How-

Table 1. Corals and associated biota recorded on reefs at Inhaca Island in recent surveys (Schleyer *et al.*, 1999; Motta *et al.*, 2002; Costa *et al.*, 2005; Schleyer *et al.*, in prep.).

CORAL	Barreira Vermelha	Ponta Torres	Baixo Danae	CORAL	Barreira Vermelha	Ponta Torres	Baixo Danae
OCTOCORALLIA				<i>Leptoria phrygia</i>			+
Alcyoniidae				<i>Oulophyllia crispa</i>			+
<i>Anthelia glauca</i>			+	<i>Platygyra daedalea</i>	+	+	+
<i>Cladiella australis</i>	+		+	<i>Plesiastrea versipora</i>			+
<i>C. kashmani</i>			+	Fungiidae			
<i>C. kremphi</i>	+		+	<i>Fungia</i> sp.			+
<i>Dendronephthya</i> sp.		+	+	Meandrinidae			
<i>Lobophytum crassum</i>			+	<i>Gyrosmlia interrupta</i>			+
<i>L. depressum</i>			+	Merulinidae			
<i>Lobophytum</i> sp.			+	<i>Hydnophora exesa</i>			+
<i>Sarcophyton glaucum</i>			+	Mussidae			
<i>Sinularia abrupta</i>			+	<i>Acanthastrea echinata</i>		+	
<i>S. brassica</i>			+	<i>Symphyllia</i> sp.		+	
<i>S. gravis</i>			+	Oculinidae			
<i>S heterospiculata</i>			+	<i>Galaxea astreata</i>	+		
<i>Sinularia</i> spp.			+	<i>G. fascicularis</i>		+	+
SCLERACTINIA				Pectiniidae			
Acroporidae				<i>Echinophyllia</i> sp.			+
<i>Acropora abrotanoides</i>	+	+		<i>Mycidium elephantotus</i>			+
<i>A. austera</i>	+			Pocilloporidae			
<i>A. appressa</i>		+	+	<i>Pocillopora damicornis</i>	+	+	+
<i>A. clathrata</i>	+		+	<i>P. verrucosa</i>	+	+	+
<i>A. cythera</i>	+			<i>Stylophora pistillata</i>		+	+
<i>A. gemmifera</i>	+	+		Poritidae			
<i>A. digitifera</i>	+			<i>Alveopora allingi</i>	+		
<i>A. hyacinthus</i>	+			<i>Goniopora</i> sp.		+	+
<i>A. microphthalmus</i>		+		<i>Porites lutea</i>	+	+	+
<i>Acropora</i> spp.	+		+	<i>P. nigrescens</i>		+	
<i>Astreopora myriophthalma</i>			+	<i>P. solida</i>	+	+	+
<i>Montipora</i> spp.	+	+	+	Siderastreidae			
Agariciidae				<i>Coscinarea</i> sp.			+
<i>Gardinoseris planulata</i>	+	+		<i>Psammocora haimeana</i>	+	+	
<i>Pavona decussata</i>	+	+		PORIFERA			
<i>P. clavus</i>	+			<i>Theonella</i> sp.			+
<i>Pavona</i> sp.		+		<i>Anthosigmella orientalis</i>			+
Dendrophylliidae				<i>Cliona celata</i>	+		
<i>Dendrophyllia</i> sp.		+		ZOANTHIDEA			
<i>Tubastrea micrantha</i>		+		<i>Palythoa</i> sp.	+	+	+
<i>Turbinaria</i> sp.			+	MOLLUSCA			
Faviidae				<i>Tridacna</i> sp.	+		+
<i>Cyphastrea</i> sp.	+		+	<i>Hyotissa hyotis</i>		+	
<i>Echinopora gemmacea</i>	+	+	+	ECHINODERMATA			
<i>Favia</i> spp.	+	+	+	<i>Diadema</i> sp.		+	+
<i>Favites</i> spp.	+	+	+	<i>Echinometra mathaei</i>	+	+	+
<i>Goniastrea</i> sp.	+	+	+	ASCIDIACEA			
<i>Lepastrea</i> sp.			+	<i>Didemnum molle</i>			+

Table 2. Percentage cover of coral reef genera at Inhaca Island (+ indicates <1% cover; principal components discussed in the text are in bold).

	Barreira Vermelha	Baixo Danae		Barreira Vermelha	Baixo Danae
SCLERACTINIA			<i>Symphyllia</i>	-	+
<i>Acanthastrea</i>	-	0.7	<i>Turbinaria</i>	-	+
<i>Acropora</i>	23.9	2.9	<i>Unknown Scleractinia</i>	1.6	2.5
<i>Alveopora</i>	+	0	OCTOCORALLIA		
<i>Astreopora</i>	-	2.0	<i>Cladiella</i>	+	+
<i>Coscinaria</i>	+	+	<i>Dendronephthya</i>	-	0.2
<i>Cyphastrea</i>	0.4	+	<i>Lobophytum</i>	-	0.3
<i>Echinophyllia</i>	-	+	<i>Sarcophyton</i>	-	0.4
<i>Echinopora</i>	2.3	0.2	<i>Sinularia</i>	+	6.3
<i>Favia</i>	0.7	0.5	<i>Unknown octocorals</i>	+	0.7
<i>Favites</i>	+	0.8	PORIFERA	0.2	5.5
<i>Fungia</i>	-	+	ACTINIARIA		
<i>Galaxea</i>	-	0.5	<i>Heteractis</i>	-	+
<i>Gardineroseris</i>	-	+	ZOANTHIDEA		
<i>Goniastrea</i>	-	+	<i>Palythoa</i>	4.5	+
<i>Leptastrea</i>	-	+	MOLLUSCA		
<i>Goniopora</i>	0.4	+	<i>Tridacna</i>	+	+
<i>Gyrosmlia</i>	-	+	ECHINODERMATA		
<i>Hydnophora</i>	-	+	<i>Diadema</i>	-	+
<i>Leptoria</i>	-	+	ASCIDIACEA		
<i>Montipora</i>	7.0	8.3	<i>Polycarpa insulsa</i>	+	0.2
<i>Mycedium</i>	-	+	<i>Polycarpa seychellensis</i>	-	+
<i>Oulophyllia</i>	-	+	ALGAE		
<i>Pavona</i>	-	+	Macroalgae	1.8	5.8
<i>Platygyra</i>	1.1	0.3	Coralline algae	0.4	5.6
<i>Plesiastrea</i>	-	+	Turf (algae and bryozoa)	23.7	35.5
<i>Pocillopora</i>	2.9	4.1	NON-LIVING		
<i>Porites</i>	6.9	4.7	Sand	3.7	3.1
<i>Psammocora</i>	-	+	Rock, dead coral	14.0	3.6
<i>Stylophora</i>	-	+			

Table 3. Relative abundance of the more common echinoderms at Baixo Danae, Barreira Vermelha and Ponta Torres in 2000 (derived from Motta *et al.*, 2002). Figures represent the number of individuals (SD) per 500 m² (n = 4).

Group	Baixo Danae	Barreira Vermelha	Ponta Torres
Sea urchins			
<i>Diadema setosum</i>	1.5 (1.3)	0.3 (0.5)	8.5 (5.8)
<i>Echinometra mathaei</i>	0.3 (0.5)		
<i>Echinostrephus molaris</i>	377.8 (212.5)	0.3 (0.5)	5.0 (10.0)
Seastars			
<i>Culcita schmideliana</i>			1.0 (1.4)
<i>Linckia</i> spp.	0.3 (0.5)	2.5 (1.3)	0.8 (1.5)
<i>Protoreaster linckii</i>		23.8 (16.5)	
Sea cucumbers			
<i>Holothuria</i> spp.		0.8 (1.5)	0.3 (0.5)
<i>Stichopus variegatus</i>			0.5 (1.0)

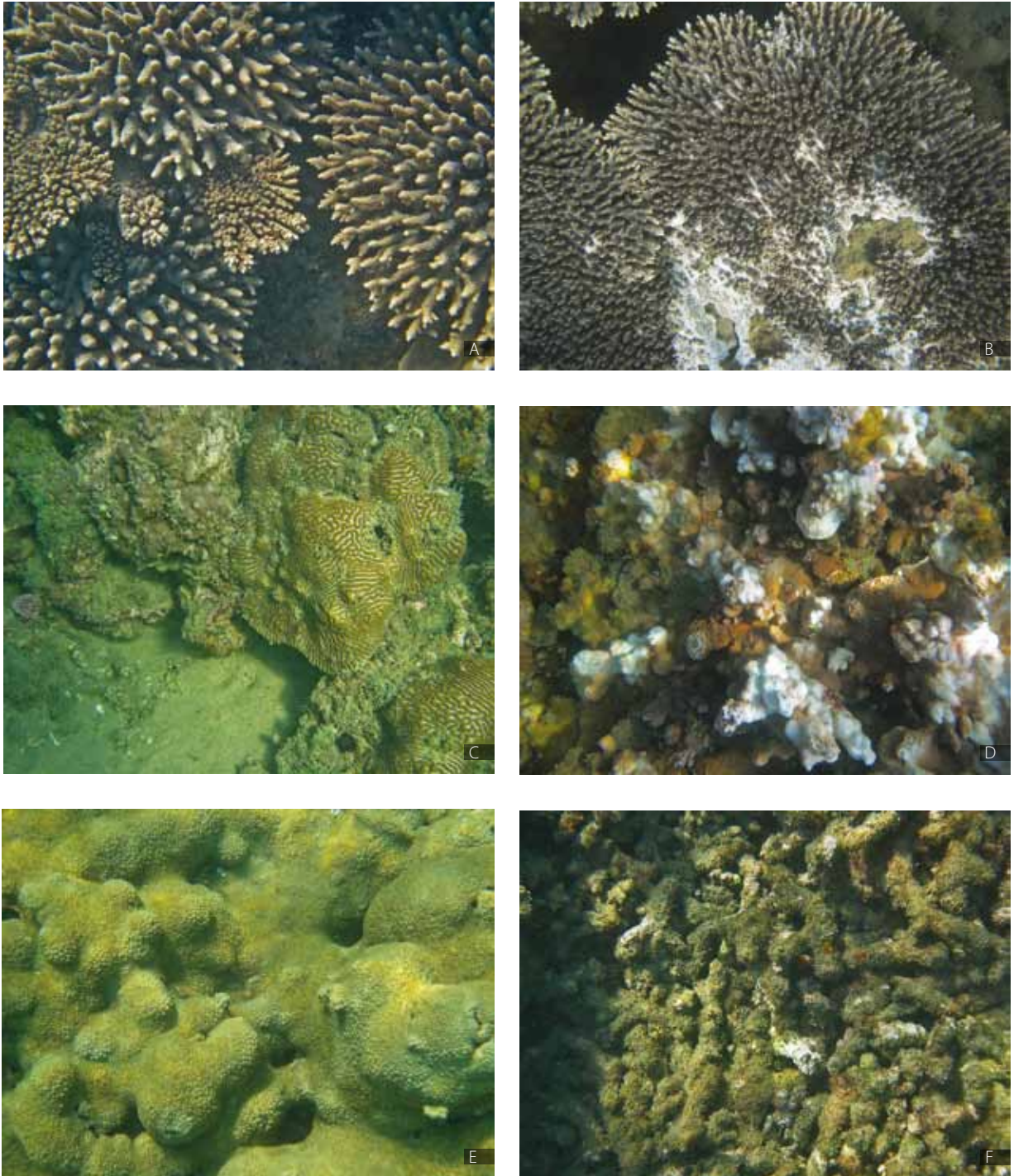


Figure 2. Barreira Vermelha has a community of resilient *Acropora* species (A), including the tabular *Acropora cytherea* (B). The reef is in marginal habitat, so much of the coral cover is low (C, showing the faviid *Platygyra daedalea*) with signs of bleaching (D, a partially bleached *Montipora* sp.). Parts of the reef are encrusted by the zoanthid, *Palythoa* (E), or comprised of coral rubble (F). Photographs by Michael Schleyer.

ever, Salm (1976) expressed concern over reef sedimentation and this, together with the ravages of destructive fishing practices and coral bleaching, has taken its toll; the reef is now smaller and its condition has deteriorated. It now extends only to 2 m in depth and the tops of the *Porites* colonies are flat and eroded (Figure 3B). These are interspersed by thickets of *Acropora microphthalmus* (Figure 3C) that are partially exposed at full spring low tide. Remnants of the *Pavona* (*P. decussata*) and *Montipora* recorded by Boshoff (1958) remain but the relative sparseness of the corals noted by Salm (1976) appears to have become a consistent feature and persists today. Other corals found at Ponta Torres are listed in Table 1.

Baixo Danae

This is a reef more typical of the southern latitudes of East Africa (Schleyer, 2000; Schleyer and Celliers, 2005a; 2005b; Celliers and Schleyer, 2008), being founded on a submerged rock massif and covered by a veneer of coral growth. It is the biggest reef in the vicinity of Maputo Bay, stretching from 25° 54.1'S; 33° 03.1'E to 25° 54.6'S; 33° 03.3'E, or just over a kilometre. It reaches a maximum width of about 500 m and ranges in depth from 10-20 m, a depth at which ENSO-related bleaching is unlikely. In profile, it tends to be flat; though it does have some massive outcrops, ridges and gullies, but it is not well-endowed with such features. Dispersed metal remains of a shipwreck lie on its outer, NE perimeter. Strong currents that appear to include tidal surges flow over it and sedimentation and scouring are evident.

The coral community on Baixo Danae is fairly sparse (Table 2; Figure 3D, E). While it has the highest biodiversity of the Maputo Bay area reefs (Table 1) with the greatest representation of both octocorals and scleractinians, the extent of exposed reef and that covered by turf (42.2%) is similar to Barreira Vermelha. The dominant benthos comprises an assemblage of species of *Montipora*, *Porites* and *Pocillopora*;

octocorals of the genus *Sinularia*; the encrusting sponge, *Anthosigmella orientalis*; and algae. The octocorals found on Baixo Danae consist of sediment-tolerant species abundant at the reef-sediment interface on more southern reefs (Schleyer and Celliers, 2003a; Schleyer and Benayahu, 2009). *Anthosigmella orientalis* is an encrusting sponge that is also sediment-tolerant (Schleyer *et al.*, 2006). The presence of these sediment-tolerant benthos and the low coral cover are indicative of the level of sedimentation and sand scouring on Baixo Danae. Although various sea urchins occur on Baixo Danae, *Echinostrephus molaris* were found in high numbers here (Table 3).

Other invertebrate fauna

Many of the benthos associated with the coral communities are also found more widely in other habitats within Maputo Bay. The echinoderms are chief amongst these, starfish (Class Asteroidea), brittle stars (Ophiuroidea), sea urchins (Echinoidea) and holothurians (Holothuroidea) being widespread in Maputo Bay, colonizing several habitats including, rocky shores, coral reefs, sand flats and seagrass beds. While they constitute a relatively small group on the reefs in terms of their diversity and abundance, brittle stars are found in high numbers, especially seen at night; about 18 species have been identified at Inhaca Island (Balinsky, 1957). The corallivorous crown-of-thorns starfish (*Acanthaster planci*) has not been recorded in the area (Kalk, 1995), although there have been records of these immediately further to the north and south (Grindley, 1963; Schleyer, 1998).

Macnae and Kalk (1958) and Kalk (1995) provide the only information available on the mollusc fauna on the shallow reefs at Inhaca Island. The corallivorous egg cowry, *Ovula ovum*, is commonly observed on the reefs, feeding on soft corals, particularly *Cladiella* spp. and also *Sinularia* spp. Other reef-associated gastropods include *Rapana rapiformis*, *Cypraea tigris*, *Mitra mitra*, *Cypraeassis rufa* and *Tonna variegata*

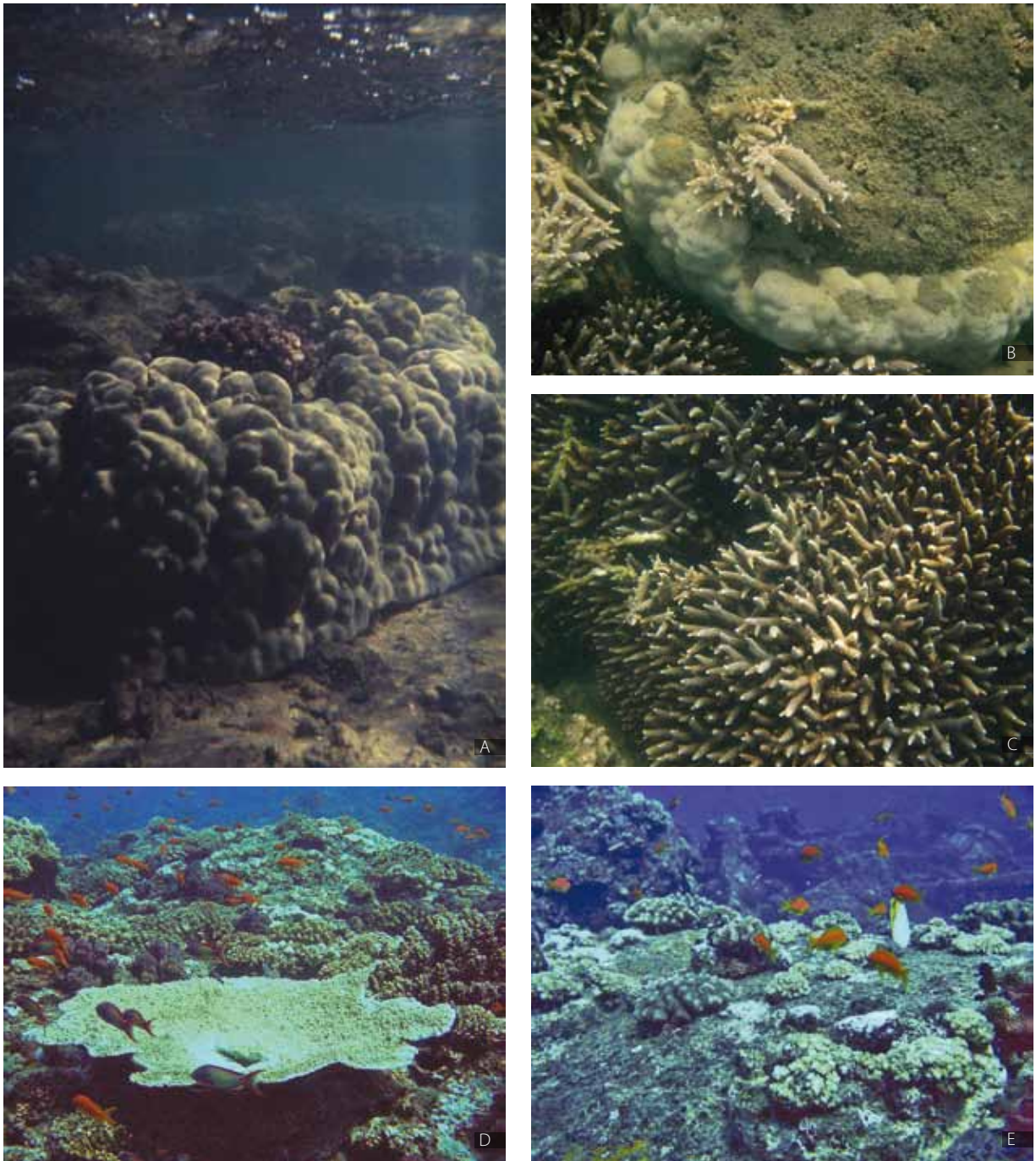


Figure 3. In the past, Ponta Torres consisted of large *Porites* bommies (A, taken in 1967). These have become reduced in size and extent by sedimentation and damaging fishing practices, with many encompassed by *Acropora microphthalmum* (B) that forms thickets (C). Baixo Danae has rich fish and coral communities, the latter dominated by *Pocillopora* spp. (D), but the coral cover in some areas is low (E). Photographs by Michael Schleyer (A-C) and Marcos Pereira (D-E).

(Kalk, 1995). The large reef bivalves, *Tridacna* spp. and *Hyotissa hyotis*, are sparse. *Octopus granulatus* has been recorded but no quantitative information on its abundance is available.

Crustacean reef fauna are represented by the lobsters *Thenus orientalis*, *Panulirus versicolor* and *P. ornatus*. These are hand-collected on the shallow reefs by local divers (pers. obs.) or in pots and nets set by commercial vessels in the deeper areas (Marshall *et al.*, 2001). Small xanthid crabs (*Liomera* sp. and *Lybia* spp.) are found associated with branching corals and larger xanthids are found within the reef matrix (*Atergatis* spp., *Menippe* spp. and *Carpillius* spp.). Stomatopods (mantis shrimps) are important predators and cleaner shrimps (*Stenopus hispidus*) remove parasites from other reef-dwellers (Kalk, 1995; pers. obs.). However, no studies have been conducted on their diversity, status and ecology in Maputo Bay.

Reef Fishes

“Reef fishes” or “coral reef fishes” have not been clearly defined in the literature and, as highlighted by Bellwood (1998), the definition and characterization of reef fish communities has not proven diagnostic. Despite the fact that the reefs in southern Mozambique are not true coral reefs derived from biogenic accretion, but rather a thin veneer of coral communities (Barradas, 1965; Ramsay, 1994; 1996; Schleyer, 1995; 2000), they nevertheless function as coral reefs for the fish communities. Thus, the rather generalized definition of “reef fish” presented by Bellwood and Wainwright (2002) is used here and it encompasses a wide range of species that vary considerably in colour, size and shape. These make up the reef fish communities on reefs located within Maputo Bay and the surrounding area (Figure 1).

The study of the ichthyofauna of Maputo Bay (previously known as Delagoa Bay) was initiated in the early 1930s with pioneering work conducted mostly by J.L.B. and Margaret Smith (e.g. Smith,

1931), which continued for nearly 50 years (Smith, 1939; 1940; 1941; 1955a; 1955b; 1958; 1962; 1967-1968). Their work was mostly taxonomic and descriptive in nature, and made reference to that published by local authors (e.g. Lopes, 1938; 1937; Sanches, 1963). Initially, due to technological limitations, only specimens captured on hook and line, spear or using chemicals were studied (Smith, 1967-1968). More recently, however, studies have incorporated the local fishery (Lichucha, 2000), reproductive biology of certain species (Abdula and Lichucha, 2000) and age and growth studies of commercial species (Fennessy *et al.*, 2004). *In situ* ecological studies have also since been initiated, taking advantage of SCUBA diving (e.g. Nagel and Degerstedt, 1999; Pereira, 2000).

Reef fishes occur throughout Maputo Bay and the surrounding areas, from depths as shallow as 5 m (in Macaneta, Baixo Ribeiro, Barreira Vermelha and Ponta Torres) to areas 30-45 m in depth, both inside and outside the Bay (at Baixo Santa Maria, Baixo Jeremias, Baixo Danae, the Well, etc.). These areas range from rocky substrata with scarce coral cover (especially those closest to the western side of the Bay subjected to high levels of turbidity and lower salinities) to extensive reefs with moderate to high coral cover in near oceanic conditions.

A total of 327 species (in 58 families) of reef fishes have been identified in the area (Appendix 1), with the majority being Indo-Pacific in their distribution. Nine families are represented by at least ten species, with the Labridae (wrasses – 31 spp.), Pomacentridae (damselfishes – 25 spp.), Chaetodontidae (butterflyfishes – 21 spp.) and Acanthuridae (surgeonfishes – 21 spp.) being the most speciose (Table 4). It is clear that more in-depth studies will increase this number, as only the most conspicuous species and families have received attention. Families with small or cryptic species (such as the Gobiidae and Blennidae) or those that pose difficulty in their identification (e.g. wrasses and parrotfishes) are frequently overlooked by divers

and are seldom recorded. Sharks and rays are also under-represented, only nine and seven species have been recorded respectively. Of these, the whale shark (*Rhincodon typus*) and the manta ray (*Mobula diabolus*) are seasonal. Of special interest, is the fact that the great white shark (*Carcharodon carcharias*) has been observed once in the Baixo de Santa Maria area by spearfishermen, and further south in the Ponta do Ouro area (M. Gonçalves, pers. com.), thus confirming previous suggestions that this species could occur in southern Mozambique (Cliff *et al.*, 1989).

Studies conducted at Barreira Vermelha and Ponta Torres have yielded relatively high levels of fish diversity, especially taking into account the size of these reefs. Nagel and Degerstedt (1999) found 121 species of fish at Barreira Vermelha and 113 at Ponta Torres. Pereira (2000), on the other hand, found 117 species at Barreira Vermelha (in 27 families) and 110 species (in 34 families) at Ponta Torres. Pereira (2000) further determined that the species evenness at Barreira Vermelha is higher than at Ponta Torres. He suggested that the fact that the former reef is subjected to extreme environmental conditions (i.e. high variations in temperature, salinity, turbidity and sedimentation), which in turn only allow a certain number of “specialized” fish species to colonize and dominate the reef, explained the differences in fish diversity on

these two reefs. Both studies were, however, conducted over short periods of time and were based on relatively small sample sizes (less than eight per reef).

Only three reefs (i.e. Baixo Danae, Barreira Vermelha and Ponta Torres) have been subjected to quantitative fish visual censuses in Maputo Bay (e.g. Nagel and Degerstedt 1999; Rodrigues *et al.*, 1999; Pereira, 2000; Motta *et al.*, 2002; Pereira *et al.*, 2003).

According to Pereira (2000), the reef fish fauna on both Ponta Torres and Barreira Vermelha was dominated in terms of density and biomass by damselfishes (Pomacentridae), surgeonfishes (Acanthuridae), butterflyfishes (Chaetodontidae), parrotfishes (Scaridae) and snappers (Lutjanidae) (Table 5). Other relatively important families included Labridae (wrasses), Haemulidae (sweetlips), Mullidae (goatfishes) and Caesionidae (fusiliers) (Table 5). Acanthuridae, Chaetodontidae, Scaridae and Pomacanthidae were found to be important in terms of density on Baixo Danae (Motta *et al.*, 2002; Pereira *et al.*, 2003). Pereira (2000) estimated that the reef fish biomass at Ponta Torres was significantly higher (6.64 ton/ha) than at Barreira Vermelha (1.97 ton/ha). These figures were considered high even though these reefs are protected, more so considering the fact that only 83 species were targeted in the surveys.

Results of fish monitoring surveys conducted as

Table 4. The most speciose reef fish families in Maputo Bay (families represented by ≥10 species).

Family	Common name	Number of species
Acanthuridae	Surgeonfishes	21
Balistidae	Triggerfishes	12
Carangidae	Kingfishes	11
Chaetodontidae	Butterflyfishes	21
Labridae	Wrasses	31
Lethrinidae	Emperors	10
Lutjanidae	Snappers	13
Pomacentridae	Damselfishes	25
Serranidae	Rockcods	19
Sparidae	Seabreams	11

Table 5. Dominant reef fish families on Barreira Vermelha and Ponta Torres (from Pereira, 2000) listed in terms of percentage contribution by each family.

Family	Barreira Vermelha		Ponta Torres	
	Density	Biomass	Density	Biomass
Acanthuridae	19.5	38.8	5.0	10.9
Caesionidae	2.6	1.4	2.9	0.2
Chaetodontidae	15.7	16.4	4.8	8.1
Labridae	7.8	4.2	5.1	1.2
Lutjanidae	7.3	1.6	56.2	52.7
Mullidae	2.0	2.2	1.7	4.5
Pomacentridae	25.3	5.0	19.1	15.4
Scaridae	13.7	6.1	2.7	2.8

Table 6. Fish density (individuals.250 m⁻²) and diversity (N° spp.250 m⁻²) on selected reefs in Maputo Bay, recorded as part of the National Coral Reef Monitoring Programme. Figures in brackets represent standard deviation. Data were derived from counts of selected fish families (Rodrigues *et al.*, 1999; Motta *et al.*, 2002; Pereira *et al.*, 2003; Pereira, unpub. data).

Year	Barreira Vermelha		Ponta Torres		Baixo Danae	
	Density	Diversity	Density	Diversity	Density	Diversity
1999	124.8	6.3	534.3	7.3		
2000	157.8 (80.7)	24.0 (3.6)	690.8 (812.4)	19.3 (4.0)	106.5 (59.7)	17.5 (2.9)
2002	218.0 (144.2)	23.0 (2.2)	306.8 (170.7)	16.3 (2.9)	33.8 (14.6)	9.8 (3.1)
2005	41.6 (38.5)	7.5 (2.9)	93.8 (121.4)	6.4 (1.5)	25.9 (21.3)	9.0 (3.3)

part of the National Coral Reef Monitoring Programme (Rodrigues *et al.*, 1999; Motta *et al.*, 2002; Pereira *et al.*, 2003; 2008) revealed substantial temporal variation in fish density and diversity on each reef (Table 3), as well as in trophic structure (Figure 4). There has been a marked decrease in both fish density and diversity on all the reefs from 1999 to 2005. Each reef has manifested a different pattern in the trophic composition of its fish fauna. On Barreira Vermelha and at Ponta Torres, there was a marked decrease in carnivores after 1999, followed by their slow but steady increase until 2005. Concurrently, herbivores have manifested the opposite trend.

These changes could be a response to a multitude of factors, including the 1998 El Nino (Schleyer *et al.*, 1999) as well as fishing pressure inside the

reserves where Barreira Vermelha and Ponta Torres are located (Costa, 2003). It should also be recognized that the nature of a monitoring programme such as this implies that trends should only be assessed after a much longer period, as the above-mentioned variations may constitute natural cycles.

Pereira (2000) also studied the relationship between habitat characteristics and fish communities at Barreira Vermelha and Ponta Torres. He suggested that the structural complexity of the substratum, its coral composition and coverage influence the fish community structure mainly through feeding interactions.

Conclusions

Environmental conditions in Maputo Bay are not conducive to coral growth or the development of coral

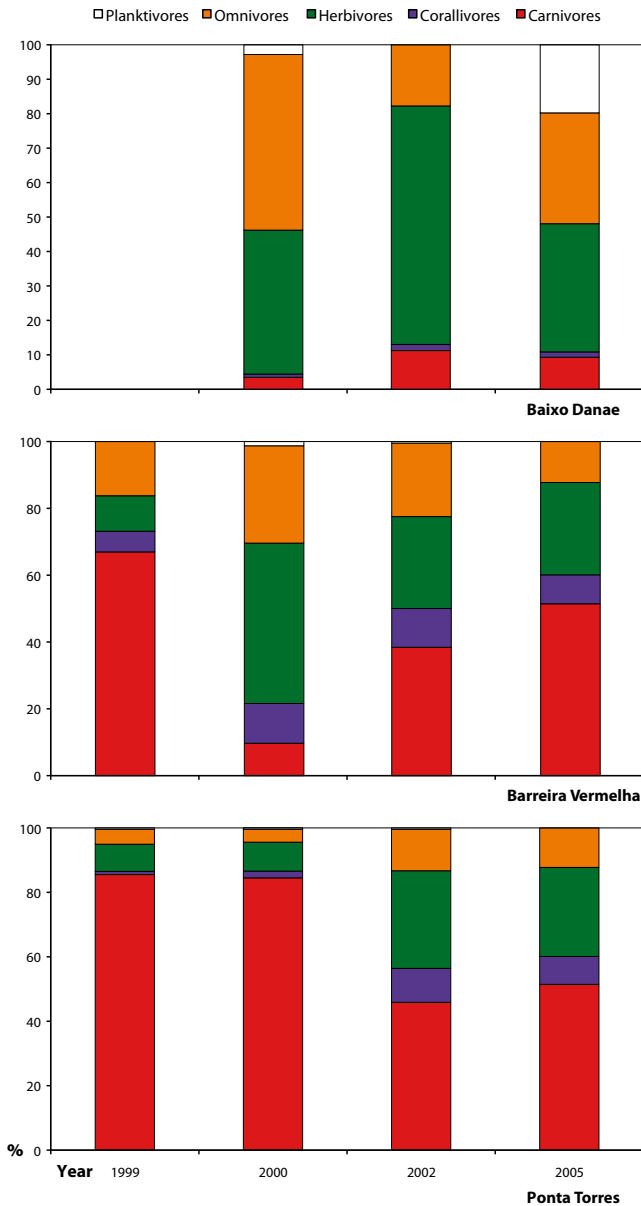


Figure 4. Major trophic fish groups on each of the reefs monitored in Maputo Bay during the Mozambique Coral Reef Monitoring Programme (Rodrigues *et al.*, 1999; Motta *et al.*, 2002; Pereira *et al.*, 2003; Pereira, unpublished). Bar graphs represent the percentage contribution of each trophic group expressed as the number of targeted fish species.250 m².

reefs. Only isolated colonies or transient coral communities are likely to occur at localities other than the reefs described above; instances of these are mentioned at Cabo Inhaca, the area between Ponta Rasa and Ponta Punduini, and have been reported for Portuguese Island (Kalk, 1995). The factors that mitigate against coral growth are primarily turbidity, sedimentation and fluctuations in salinity (see Chapter 3 – Geomorphology and Evolution of Maputo Bay and Chapter 4 – Hydrology and Circulation of Maputo Bay) that originate from the river mouths, mangroves and estuaries that surround Maputo Bay.

The coral reefs at Inhaca Island are thus not typical of the other high-latitude reefs that occur in southern Africa (Schleyer *et al.*, in prep.). Those at Bazaruto (Schleyer and Celliers, 2005b), in southern Mozambique south of Inhaca (Robertson *et al.*, 1996; Pereira, 2003) and South Africa (Schleyer, 2000; Schleyer and Celliers, 2005b; Celliers and Schleyer, 2008) have greater permanence and a much higher biodiversity; they are distant from riverine influence and are not subjected to such extremes of turbidity, sedimentation and fluctuations in salinity. The level to which the coral community on Barreira Vermelha has adapted to these deleterious conditions contradicts conventional wisdom on coral reefs. Tabulate acroporids are particularly abundant on Barreira Vermelha, yet these corals are usually the most sensitive to such poor environmental conditions.

This highlights the uniqueness of the Barreira Vermelha coral community, which merits more intensive study on the specialisation and genetic isolation of its corals. A preliminary examination of the regional genetic connectivity of *Acropora austera* and *Platygyra daedalea* has indicated that the latter is indeed the case with clear genetic isolation of these species on Barreira Vermelha (Macdonald *et al.*, 2009).

While the reef at the point of Ponta Torres is also marginal, that in the channel would be more typical of a protected, lagoonal reef but for its poor condition.

This would be partially due to hydrological changes brought about by the aforementioned rock blasting and sedimentation. However, most of its deterioration appears to have been caused by destructive fishing practices.

Baixo Danae most closely approaches the norm for coral biodiversity and community structure on the high-latitude reefs along the south East African coast (Schleyer, 2000; Schleyer and Celliers, 2005a; 2005b; Celliers and Schleyer, 2008). Conditions here nevertheless remain marginal and it must likewise experience some turbidity and sedimentation from water emptying from Maputo Bay. A coral cover of a mere ~35% (Table 2) is indicative of this and it constitutes another reef that merits further study.

Corals are under global threat from climate change and the value of high-latitude reefs for studies on the effects of this phenomenon have been elaborated by Schleyer and Celliers (2002; 2003b). Apparent consequences of climate change have been demonstrated in long-term monitoring on a South African reef (Schleyer *et al.*, 2008), manifested by a shift in community

structure and reduced success in coral recruitment (Schleyer *et al.*, 2008; Schleyer, 2009). Corals on the reefs at Inhaca appear to have developed remarkable resilience and a study of their adaptive potential may well provide material for reef conservation and rehabilitation in the face of global climate change. Their conservation is thus imperative.

While the taxonomy of reef fishes in Maputo Bay is relatively well known, aspects of their basic ecology and biology are poorly understood and need further attention, especially for commercially important species or those that are threatened and/or endemic. This is considered important in view of climate change-related threats to local coral reefs as well as those arising from the booming tourism industry and fisheries development. The status, population dynamics, migration, stock assessments, reproduction, age and growth of local reef fishes are poorly known and are fundamental to the management and conservation of these resources. Their conservation is deemed as important as that of the corals.

Acknowledgements

MHS thanks the South African Association for Marine Biological Research for support in the preparation of this manuscript. MAMP thanks Eduardo J.S. Videira for commenting on early drafts and helpful discussion

during the preparation of the manuscript and acknowledges support provided by Associação para Investigação Costeira e Marinha (AICM).

Bibliography

- Abdula, R.G., Lichucha, I., 2000. Alguns aspectos da biologia das principais espécies capturadas à linha e com covos no sul de Moçambique. *Boletim de Divulgação do Instituto de Investigação Pesqueira* 33, 14-23.
- Balinsky, J.B., 1957. The ophiuroidea of Inhaca Island. *Annals of the Natal Museum* 14, 1-32.
- Barradas, L., 1965. Rochas do Quaternário da beira-mar (sul de Moçambique). *Memórias do Instituto de Investigação Científica de Moçambique* 7, Série A, 37-84.
- Bellwood, D.R., 1996. The Eocene fishes of Monte

- Bolca: the earliest coral reef fish assemblage. *Coral Reefs* 15, 11-19.
- Bellwood, D.R., 1998. What are reef fishes? - Comment on the report by D. R. Robertson: Do coral-reef fish faunas have a distinctive taxonomic structure? *Coral Reefs* 17, 187-189.
- Bellwood, D.R., Wainwright, P.C., 2002. The history and biogeography of fishes on coral reefs. In: *Coral Reef Fishes – Dynamics and Diversity in a Complex Ecosystem* (Sale, P.F., Ed.). Academic Press, San Diego, pp. 5-32.
- Boshoff, P.H., 1958. Development and constitution of the coral reefs. In: *A Natural History of Inhaca Island, Moçambique* (Macnae, W., Kalk, M., Eds.). Witwatersrand University Press, Johannesburg, South Africa, pp 49-56.
- Boshoff, P.H., 1981. An annotated checklist of southern African Scleractinia. Investigational Report, Oceanographic Research Institute No. 49, 45 pp.
- Celliers, L., Schleyer, M.H., 2008. Structure and management of high-latitude coral communities at Sodwana Bay, South Africa. *Biodiversity and Conservation* 17, 3097-3117.
- Cliff, G., Dudley, S.F.J., Davis, B., 1989. Sharks caught in the protective gill nets off Natal, South Africa. 2. The great white shark, *Carcharodon carcharias* (Linnaeus). *South African Journal of Marine Science* 8, 131-144.
- Costa, A.C.D., 2003. Avaliação de alguns aspectos ecológicos e efeitos antropogénicos sobre os recifes de coral da Ilha da Inhaca. BSc. Hons. Thesis, Universidade Eduardo Mondlane, Maputo, 47 pp.
- Costa, A., Pereira, M.A.M., Motta, H., Schleyer, M., 2005. Status of the coral reefs of Mozambique. In: *Coral reef degradation in the Indian Ocean: Status report 2005* (Souter, D., Linden, O., Eds.). CORDIO, Kalmar, Sweden, pp. 54-60.
- Fennessy, S., Torres, R., Lichucha, I., van der Elst, R., 2004. Idade, crescimento e avaliação preliminar de *Polysteganus coeruleopunctatus* (cachucho ou blueskin) capturado com covos no Sul de Moçambique. Presented at the Third National Conference on Coastal Zone Research, Maputo, 28th-30th July 2004.
- Froese, R., Pauly, D. (Eds.), 2009. FishBase. World Wide Web electronic publication. www.fishbase.org, version (06/2009).
- Grindley, J.R., 1963. A specimen of the asteroid *Acanthaster planci* (Linnaeus) from the Mozambican coast. *Durban Museum Novitates* 6, 265-268.
- Goldman, B., Talbot, F.H., 1976. Aspects of the ecology of coral reef fishes. In: *Biology and Geology of Coral Reefs* (Jones, O. A., Endean, R. (Eds). Vol. III: Biology 2, Academic Press, New York, pp. 125-154.
- Kalk, M., 1995. *A natural history of Inhaca Island, Mozambique*. Witwatersrand University Press, Johannesburg, South Africa, 395 pp.
- Kohler, K.E., Gill, S.M., 2006. Coral point count with Excel extensions (CPCe): a visual Basic program for the determination of coral and substrate coverage using random point count methodology. *Computers and Geosciences* 32, 1259-1269.
- Lichucha, I., 2000. Pesca à linha e com covos no sul de Moçambique. Evolução e avaliação da pescaria: 1986-1999. *Boletim de Divulgação do Instituto de Investigação Pesqueira* 33, 7-13.
- Lopes, A.P., 1937. Fauna da Ilha da Inhaca – Peixes. *Separata do Documentário Trimestral Moçambique* 9, 79-103.
- Lopes, A.P., 1938. Fauna da Ilha da Inhaca – Peixes. *Separata do Documentário Trimestral Moçambique* 16, 41-62.
- Macdonald, A.H.H., Schleyer, M.H., Lamb, J., 2009. South east African, high-latitude coral communities, a canary for western Indian Ocean coral reefs? Proceedings of the 11th International Coral Reef Symposium, Ft. Lauderdale, Florida, 7-11 July 2008, pp. 434-438.

- Macnae, W., Kalk, M., 1958. *A Natural History of Inhaca Island, Moçambique*. Witwatersrand University Press, Johannesburg, South Africa, 163 pp.
- Marshall, N., Milledge S.A.H., Afonso, P.S., 2001. The sea cucumber fisheries in Mozambique. In: *Stormy seas for marine invertebrates – trade in sea cucumbers, seashells and lobsters in Kenya, Tanzania and Mozambique*. Trade Review. TRAFFIC- East/Southern Africa, 70 pp.
- Motta, H., Pereira, M.A.M., Schleyer, M.H., 2002. Coral reef degradation in Mozambique, results of monitoring 1999-2000. In: *Coral reef degradation in the Indian Ocean: Status report 2002* (Linden, O., Souter, D., Wilhelmsson, D., Obura, D. (Eds.)). CORDIO, Kalmar, Sweden, pp. 55-60.
- Nagel, K., Degerstedt, C., 1999. The marine reserves of Inhaca Island, Mozambique: an inventory of coral reef associated fish and aspects of possible interactions with the fishery and tourism. Swedmar Working Paper 18/99, Gothenburg, SWEDMAR, 24 pp.
- Pereira, M.A.M., 2000. Estudo comparativo das comunidades ictiológicas de dois recifes de coral da Ilha da Inhaca e sua relação com a estrutura do habitat. BSc Hons. Thesis, Universidade Eduardo Mondlane Maputo, 68 pp.
- Pereira, M.A.M., 2003. Recreational SCUBA diving and reef conservation in southern Mozambique. MSc. Thesis, University of Natal, Durban.
- Pereira, M.A.M., Abrantes, K.G.S., Videira, E.J.S., 2002. Human impacts on the ecology of Ponta Torres reef (Inhaca Island). Maputo, Programa de Gestão dos Recifes de Coral de Moçambique. Publicação Especial do PGRCM No. 1, 5 pp.
- Pereira, M.A.M., Videira, E.J.S., Motta, H., Louro, C.M.M., Abrantes, K.G.S., Schleyer, M.H., 2003. Coral reef monitoring in Mozambique III: 2002 Report. Maputo, Mozambique Coral Reef Management Programme, 16 pp.
- Pereira, M.A.M., Videira, E.J.S., 2005. Distribution and community structure of butterflyfishes (Pisces: Chaetodontidae) in southern Mozambique. *Western Indian Ocean Journal of Marine Science* 4, 39-46.
- Pereira, M.A.M., Videira, E.J.S., Costa, A.C.D., 2008. Update on coral reef activities in Mozambique (2004-2006). In: *Ten years after bleaching - facing the consequences of climate change in the Indian Ocean* (Obura, D.O., Tamelander, J., Linden, O. (Eds.)). CORDIO status report 2008, Mombasa, Coastal Oceans Research and Development in the Indian Ocean/Sida-SAREC, pp. 115-119.
- Perry, C.T., 2005. Structure and development of detrital reef deposits in turbid nearshore environments, Inhaca Island, Mozambique. *Marine Geology* 214, 143-161.
- Ramsay, P.J., 1994. Marine geology of the Sodwana Bay shelf, southeast Africa. *Marine Geology* 120, 225-247.
- Ramsay, P.J., 1996. Quaternary marine geology of the Sodwana Bay continental shelf, Northern Kwa-Zulu-Natal. *Bulletin of the Geological Survey of Southern Africa* 117, 1-85.
- Riegl, B., 1995a. A revision of the hard coral genus *Acropora* Oken, 1815 (Scleractinia: Astrocoeniina: Acroporidae) in South East Africa. *Zoological Journal of the Linnean Society* 113, 249-288.
- Riegl, B., 1995b. Description of four new species in the hard coral genus *Acropora* Oken, 1815 (Scleractinia: Astrocoeniina: Acroporidae) from South East Africa. *Zoological Journal of the Linnean Society* 113, 229-247.
- Riegl, B., 1996. Corals of the south-west Indian Ocean IV. The hard coral family Faviidae Gregory, 1900 (Scleractinia: Faviina). Investigational Report, Oceanographic Research Institute No. 70, 47 pp.
- Robertson, D.R., 1998. Do coral-reef fish faunas have a distinctive taxonomic structure? *Coral Reefs* 17, 179-186.

- Robertson, W.D., Schleyer, M.H., Fielding, P.J., Tomalin, B.J., Beckley, L.E., Fennessey, S.T., van Der Elst, R.P., Bandeira, S., Macia, A., Gove, D., 1996. Inshore marine resources and associated opportunities for development of the coast of southern Mozambique: Ponta Do Oura to Cabo de Santa Maria. Oceanographic Research Institute, Unpublished Report No. 130, 51 pp.
- Rodrigues, M.J., Motta, H. Pereira, M.A.M., Gonçalves, M., Carvalho, M., Schleyer, M.H., 1999. Coral reef monitoring in Mozambique. I: The monitoring programme and 1999 report. Maputo, MICOA/ORI, 57 pp.
- Salm, R.V., 1976. The dynamics and management of the Ponta Torres coral reef, Inhaca Island, Moçambique. *Memórias do Instituto de Investigação Científica de Moçambique* 12A, 25-40.
- Sanches, J.G., 1963. Contribuição para o estudo dos peixes teleósteos da Ilha de Inhaca (Moçambique). *Memórias da Junta de Investigação do Ultramar*, 2ª Série 44, 1-207.
- Schleyer, M.H., 1995. South African coral reef communities. In: *Wetlands of South Africa* (Cowan, G.I., Ed.). Department of Environmental Affairs and Tourism, Pretoria, pp. 131-140.
- Schleyer, M.H., 1998. Crown of thorns starfish in the Indian Ocean. *Reef Encounter* 23, 25-27.
- Schleyer, M.H., 2000. South African coral communities. In: *Coral Reefs of the Indian Ocean: Their Ecology and Conservation* (McClanahan, T., Sheppard, C., Obura, D., Eds.). Oxford University Press, New York, pp 83-105.
- Schleyer, M.H., 2009. *Extreme Environments: High-latitude Reefs - South African coral reefs*. Oxford University Press, pp 72-73.
- Schleyer, M.H., Benayahu, Y., 2009. Soft coral biodiversity and distribution in East Africa: Gradients, function and significance. Proceedings of the 11th International Coral Reef Symposium, Ft. Lauderdale, Florida, 7-11 July 2008, pp. 1388-1391.
- Schleyer, M.H., Celliers, L., 2002. A consideration of the biodiversity and future of Southern African coral reefs. In: *Coral reef degradation in the Indian Ocean: Status report 2002* (Linden, O., Souter, D., Wilhelmsson, D., Obura, D., Eds). CORDIO, Kalmar, Sweden, pp. 83-90.
- Schleyer, M.H., Celliers, L., 2003a. Coral dominance at the reef-sediment interface in marginal coral communities at Sodwana Bay, South Africa. *Marine and Freshwater Research* 54, 967-972.
- Schleyer, M.H., & Celliers, L., 2003b. Biodiversity on the marginal coral reefs of South Africa: what does the future hold? *Zoologische Verhandlungen* 345, 387-400.
- Schleyer, M.H., Celliers, L., 2005a. The coral reefs of Bazaruto Island, Mozambique, with recommendations for their management. *Western Indian Ocean Journal of Marine Science* 4, 227-236.
- Schleyer, M.H., Celliers, L., 2005b. Modelling reef zonation in the Greater St Lucia Wetland Park, South Africa. *Estuarine and Coastal Shelf Science* 63, 373-384.
- Schleyer, M.H., Heikoop, J.M., Risk, M.J., 2006. A benthic survey of Aliwal Shoal and assessment of the effects of a wood pulp effluent on the reef. *Marine Pollution Bulletin* 52, 503-514.
- Schleyer, M.H., Kruger, A., Celliers, L., 2008. Long-term community changes on high-latitude coral reefs in the Greater St Lucia Wetland Park, South Africa. *Marine Pollution Bulletin* 56, 493-502.
- Schleyer, M.H., Obura, D., Motta, H., Rodrigues, M.J., 1999. A preliminary assessment of coral bleaching in Mozambique. In: *Coral reef degradation in the Indian Ocean: Status reports and project presentations 1999* (Lindén, O., Sporrang, N., Eds.). Stockholm, CORDIO/SAREC, pp. 37-42.
- Smith, J.L.B., 1931. New and little known fish from the south and east coasts of Africa. *Records of the*

- Albany Museum of Grahamstown* 4, 145-160.
- Smith, J.L.B., 1939. New records and descriptions of marine fishes from Portuguese East Africa. *Transactions of the Royal Society South Africa* 27, 215-222.
- Smith, J.L.B., 1940. Sparid fishes from Portuguese East Africa, with a note on the genus *Gymnocranius* Klunzinger. *Transactions of the Royal Society of South Africa* 28, 175-182.
- Smith, J.L.B., 1941. The genus *Gymnocranius* Klunzinger, with notes on certain rare fishes from Portuguese East Africa. *Transactions of the Royal Society of South Africa* 28, 441-452.
- Smith, J.L.B., 1955a. New species and new records of fishes from Moçambique. *Memórias do Museu Dr. Álvaro de Castro* 3, 3-27.
- Smith, J.L.B., 1955b. East African unicorn fishes from Mozambique. *South African Journal of Science* 51, 169-174.
- Smith, J.L.B., 1958. The marine fishes of Inhaca. In: *A Natural History of Inhaca Island, Moçambique* (Macnae, W., Kalk, M., Eds.). Witwatersrand University Press, Johannesburg, pp. 113-116.
- Smith, J.L.B., 1962. The moray eels of the western Indian Ocean and the Red Sea. *Rhodes University Ichthyological Bulletin* 23, 421-444.
- Smith, M.M., 1967-1968. *Echidna tritor* (Vaillant & Sauvage, 1875), the large adult of *Echidna polyzona* (Richardson, 1845), and other interesting fishes collected by Dr. R.A.C. Jensen in southern Moçambique waters. *Memórias do Instituto de Investigação Científica de Moçambique, Série A*, 9, 293-308.
- Smith, M.M., Heemstra, P.C., 1991. *Smith's sea fishes*. Johannesburg, Southern Book Publishers, 1048 pp.
- Vivien, M.L., 1973. Ecology of the fishes of the inner coral reef flat in Tuléar (Madagascar). *Journal of the Marine Biological Association of India* 15, 20-45.

APPENDIX 1. Checklist of reef-associated fish species positively identified in Maputo Bay and the surrounding areas (after Kalk 1995; Smith and Heemstra, 1991; Nagel and Degerstedt, 1999; Pereira, 2000; Motta et al. 2002; Pereira et al. 2003; Pereira and Videira, 2005; M. Pereira, unpub. data; T. Simões, pers. com.). Species are organized alphabetically within Families. The taxonomy follows Froese and Pauly (2009).

Acanthuridae

Acanthurus blochii
Acanthurus dussumieri
Acanthurus leucosternon
Acanthurus lineatus
Acanthurus mata
Acanthurus nigricauda
Acanthurus nigrofuscus
Acanthurus tennentii
Acanthurus thompsoni
Acanthurus triostegus
Acanthurus xanthopterus
Ctenochaetus striatus
Ctenochaetus strigosus
Naso annulatus
Naso brevirostris
Naso lituratus
Naso unicornis
Paracanthurus hepatus
Zebрасoma scopas
Zebрасoma desjardini
Zebрасona veliferum

Apogonidae

Apogon aureus
Apogon fraenatus
Apogon kallopterus
Apogon angustatus
Apogon cookii
Apogon semiornatus
Archamia fucata
Cheilodipterus lineatus

Aulostomidae

Aulostomus chinensis

Balistidae

Balistapus undulatus
Balistoides conspicillum
Balistoides viridescens
Melichthys indicus
Melichthys niger
Odonus niger
Pseudobalistes flavimarginatus
Pseudobalistes fuscus
Rhinecanthus rectangularis
Sufflamen bursa
Sufflamen chrysopterus
Sufflamen fraenatus

Belonidae

Thylosurus crocodilus crocodilus

Blenniidae

Antennablennius australis
Cirripectes castaneus
Exallias brevis
Parapercis hexophthalma
Parapercis punctulata
Plagiotremus rhinorhynchus
Plagiotremus tapeinosoma

Caesionidae

Caesio caeruleus
Caesio xanthonota

Caracanthidae

Caracanthus maculatus
Caracanthus madagascariensis

Carangidae

Alectis indicus
Carangoides fulvoguttatus
Caranx ignobilis
Caranx melampygus
Caranx sexfasciatus
Elagatis bipinnulata
Gnathanodon speciosus
Pseudocaranx dentex
Scomberoides commersonianus
Seriola dumerili
Trachinotus africanus

Carcharinidae

Carcharhinus brevespinna
Carcharhinus leucas
Carcharhinus melanopterus
Carcharhinus wheeleri
Eugomphodus taurus
Galeocerdo cuvier
Triaenodon obesus

Chaetodontidae

Chaetodon auriga
Chaetodon blackburnii
Chaetodon falcula
Chaetodon guttatissimus
Chaetodon interruptus
Chaetodon kleinii
Chaetodon lineolatus
Chaetodon lunula
Chaetodon madagaskariensis
Chaetodon melannotus
Chaetodon meyeri
Chaetodon trifasciatus
Chaetodon trifasciatus
Chaetodon vagabundus

Chaetodon xanthocephalus

Chaetodon zanzibarensis
Forcipiger flavissimus
Hemitaurichthys zoster
Heniochus acuminatus
Heniochus diphreutes
Heniochus monoceros

Cirrithidae

Cirrhichthys oxycephalus
Paracirrhites arcatus
Paracirrhites forsteri

Congridae

Conger cinereus cinereus

Coryphaenidae

Coryphaena hippurus

Dasyatidae

Dasyatis kuhlii
Himantura uarnak
Rhinobatos leucospilus
Taeniura lymma
Taeniura melanospilos
Torpedo fuscomaculata
Torpedo sinuspersici

Diodontidae

Diodon hystrix
Diodon liturosus
Lophodiodon calori

Echeneidae

Echeneis naucrates

Ephippidae

Platax orbicularis
Platax teira
Tripteronodon orbis

Fistulariidae

Fistularia commersonii

Gerridae

Gerres acinaces

Gobiidae

Cryptocentrus cryptocentrus
Gobiodon rivulatus
Istigobius decoratus
Nemateleotris magnifica
Paragobiodon modestus
Valenciennesa strigata

Haemulidae

Plectorhinchus flavomaculatus
Plectorhinchus gaterinus
Plectorhinchus gibbosus
Plectorhinchus plagiodesmus
Plectorhinchus playfairi
Plectorhinchus sordidus

Holocentridae

Myripristis adusta
Myripristis kuntee
Myripristis murdjan
Neoniphon sammara
Sargocentron caudimaculatum
Sargocentron diadema
Sargocentron spiniferum

Istiophoridae

Makaira indica
Istiophorus platypterus
Tetrapturus audax

Kyphosidae

Kyphosus bigibbus
Kyphosus cinerascens
Kyphosus vaigiensis

Labridae

Anampses caeruleopunctatus
Anampses meleagrides
Bodianus axillaris
Bodianus diana
Cheilinus fasciatus
Cheilinus trilobatus
Coris aygula
Coris caudimacula
Coris formosa
Coris gaimard
Gomphosus caeruleus
Halichoeres cosmetus
Halichoeres dussumieri
Halichoeres hortulanus
Halichoeres lapillus
Halichoeres marginatus
Halichoeres nebulosus
Halichoeres scapularis
Hemigymnus fasciatus
Hemigymnus melapterus
Hologymnosus doliatus
Labroides bicolor
Labroides dimidiatus
Pseudocheilinus hexataenia
Stethojulis albovittata
Stethojulis interrupta

Stethojulis strigiventer
Thalassoma amblycephalum
Thalassoma hardwicke
Thalassoma hebraicum
Thalassoma lunare

Lethrinidae

Gnathodentex aureolineatus
Gymnocranius griseus
Lethrinus crocineus
Lethrinus harak
Lethrinus lentjan
Lethrinus mahsena
Lethrinus microdon
Lethrinus nebulosus
Lethrinus sanguineus
Monotaxis grandoculis

Lutjanidae

Aphareus rutilans
Aprion virescens
Lutjanus argentimaculatus
Lutjanus bohar
Lutjanus ehrenbergii
Lutjanus fulviflamma
Lutjanus gibbus
Lutjanus kasmira
Lutjanus lutjanus
Lutjanus monostigma
Lutjanus rivulatus
Lutjanus sanguineus
Lutjanus sebae

Mobulidae

Mobula diabolus

Monacanthidae

Cantherhines pardalis

Monodactylidae

Monodactylus argenteus

Mullidae

Mulloidichthys flavolineatus
Mulloidichthys vanicolensis
Parupeneus barberinus
Parupeneus bifasciatus
Parupeneus cyclostomus
Parupeneus indicus
Parupeneus macronema
Parupeneus rubescens

Mugilidae

Liza macrolepis
Valamugil buchanani

Muraenidae

Echidna nebulosa
Echidna polyzona

Gymnomuraena zebra
Gymnothorax eurostus
Gymnothorax favagineus
Gymnothorax flavimarginatus
Sidera grisea

Nemipteridae

Parascalopsis eriomma
Scolopsis ghanam
Scolopsis vosmeri

Orectolobidae

Stegostoma fasciatus

Ostraciidae

Cantherhines pardalis
Ostracion cubicus
Ostracion meleagris

Pempheridae

Pempheris adusta
Pempheris schwenkii

Pinguipedidae

Paraparsis hexophthalma

Platycephalidae

Papilloculiceps longiceps
Platycephalus indicus

Pomacanthidae

Apolemichthys trimaculatus
Centropyge acanthops
Centropyge bispinosus
Centropyge multispinis
Pomacanthus imperator
Pomacanthus semicirculatus
Pomacanthus rhomboides

Pomacentridae

Abudefduf natalensis
Abudefduf sordidus
Abudefduf sparoides
Abudefduf vaigiensis
Amphiprion allardi
Amphiprion akallopisos
Chromis caerulea
Chromis dimidiata
Chromis dasygenys
Chromis lepidolepis
Chromis nigrura
Chromis ternatensis
Chromis viridis
Chromis weberi
Chrysiptera annulata
Chrysiptera unimaculata
Dascyllus aruanus
Dascyllus carneus
Dascyllus trimaculatus

Neopomacentrus cyanomus
Plectroglyphidodon dickii
Plectroglyphidodon lacrymatus
Plectroglyphidodon leucozonus
Pomacentrus caeruleus
Pomacentrus trichourus

Pseudochromidae

Pseudochromis dutoiti
Pseudochromis natalensis
Pseudochromis tauberæ

Rhincodontidae

Rhincodon typus

Rhinobatidae

Rhina ancylostoma

Scaridae

Calotomus spinidens
Scarus ghobban
Scarus rubroviolaceus
Scarus sordidus

Scombridae

Acanthocybium solandri
Euthynnus affinis
Gymnosarda unicolor
Katsuwonus pelamis
Sarda orientalis
Scomberomorus commerson
Scomberomorus plurilineatus
Thunnus albacares

Scorpaenidae

Pterois antennata
Pterois miles
Scorpaenopsis diabolus
Scorpaenopsis gibbosa
Scorpaenopsis oxycephala
Scorpaenopsis venosa
Sebastapistes cyanostigma
Synanceia verrucosa

Serranidae

Pseudanthias squamipinnis
Aethaloperca rogaa
Cephalopholis argus
Cephalopholis boenack
Cephalopholis miniata
Epinephelus caeruleopunctatus
Epinephelus fasciatus
Epinephelus flavocaeruleus
Epinephelus fuscoguttatus
Epinephelus guaza
Epinephelus lanceolatus
Epinephelus longispinis
Epinephelus malabaricus
Epinephelus merra

Epinephelus tauvina
Epinephelus tukula
Plectropomus areolatus
Plectropomus punctatus
Gammistes sexlineatus

Siganidae

Siganus sutor

Sparidae

Argyrops filamentosus
Argyrops spinifer
Acanthopagrus bifasciatus
Cheimeirus nufar
Chrysoblephus puniceus
Diplodus cervinus hottentotus
Diplodus sargus capensis
Polysteganus coeruleopunctatus
Polysteganus praeorbitalis
Rhabdosargus sarba
Rhabdosargus thorpei

Sphyraenidae

Sphyraena barracuda
Sphyraena jello

Sphyrnidae

Sphyrna mokarran

Synodontidae

Saurida gracilis
Synodus dermatogenys
Atherinomorus lacunosus

Tetraodontidae

Arothron hispidus
Arothron meleagris
Arothron nigropunctatus
Arothron stellatus
Canthigaster amboinensis
Canthigaster bennetti
Canthigaster solandri
Canthigaster valentini

Zanclidae

Zanclus cornutus