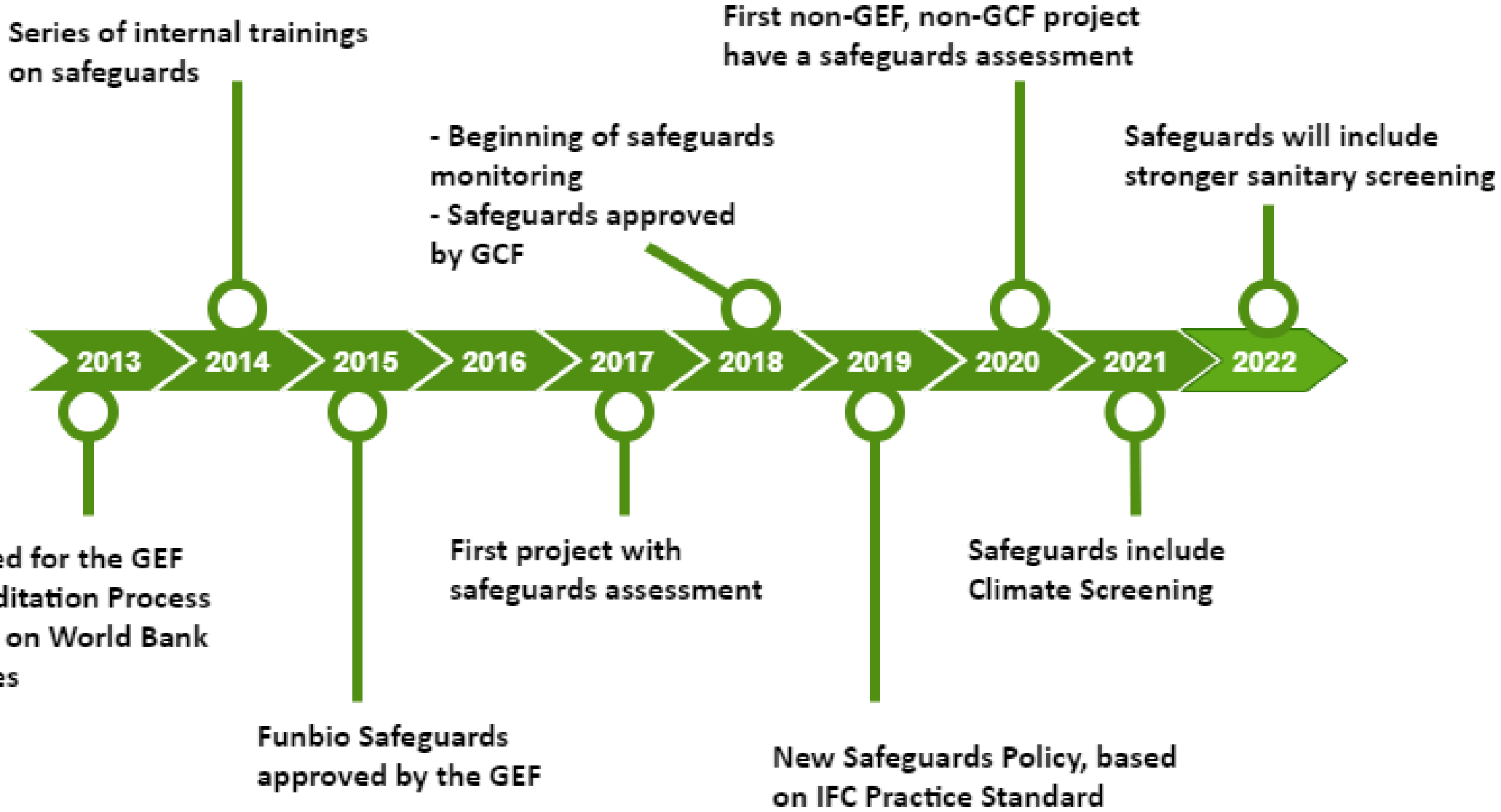


# FUNBIO | HÁ MAIS DE 20 ANOS CONSERVANDO O FUTURO



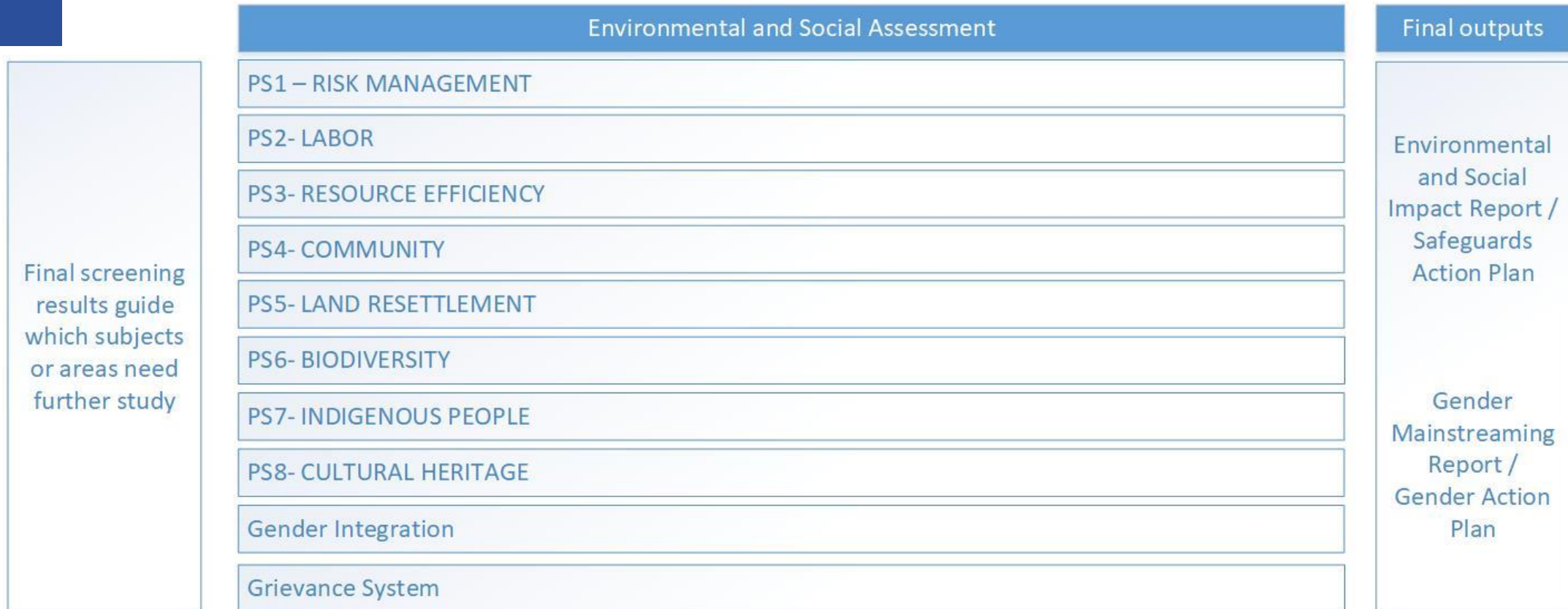
# Timeline



# Safeguards

- It is just a specialized form of project risk management, which appears to go beyond the project's main/initial scope at first sight.
- On second sight it makes projects stronger
- Doesn't need to be costly, especially if included sooner than later into project design
- Most safeguards monitoring can also be embedded in the usual project monitoring, the exception is the grievance system which is truly a different thing.

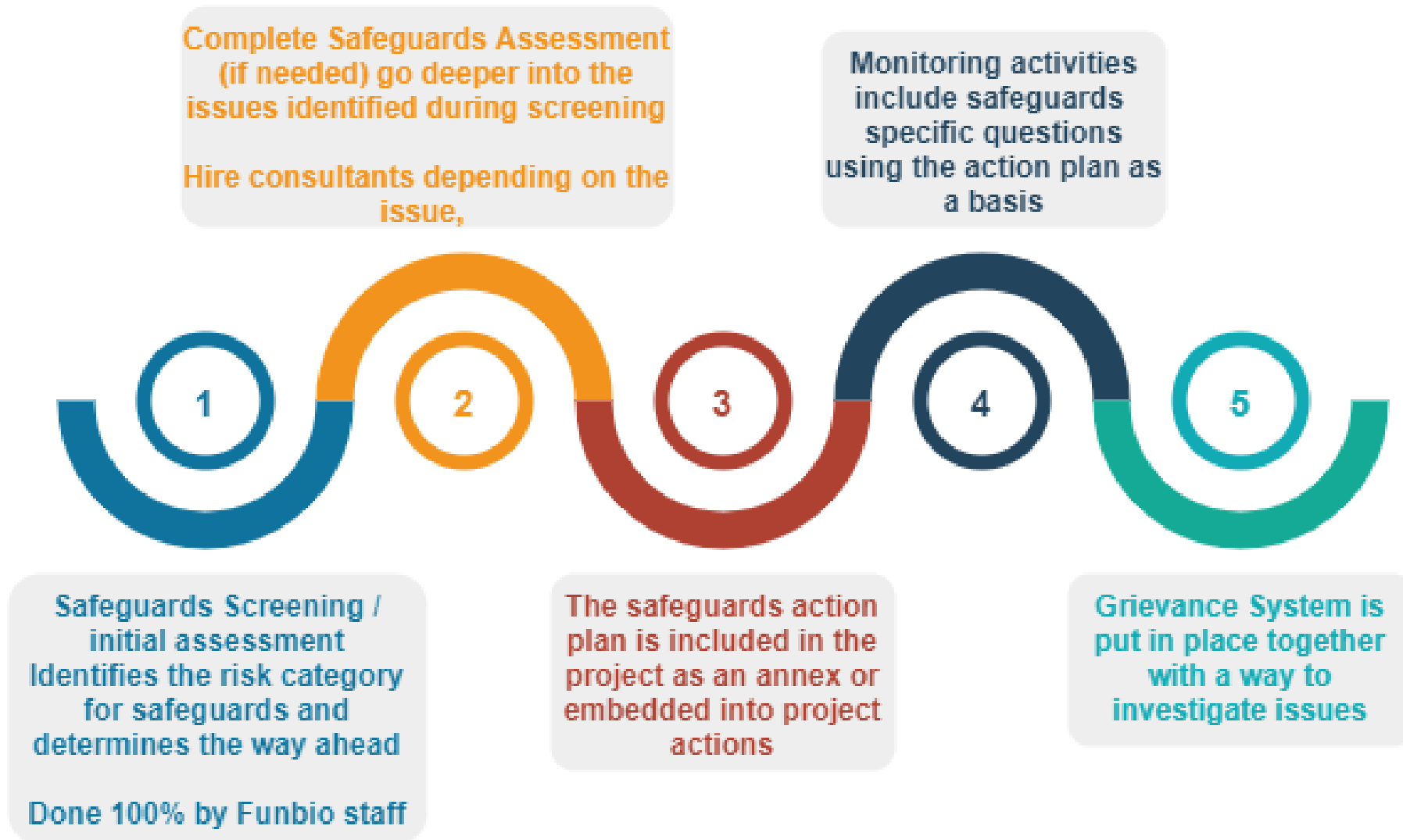
# Environmental and Social Assessment



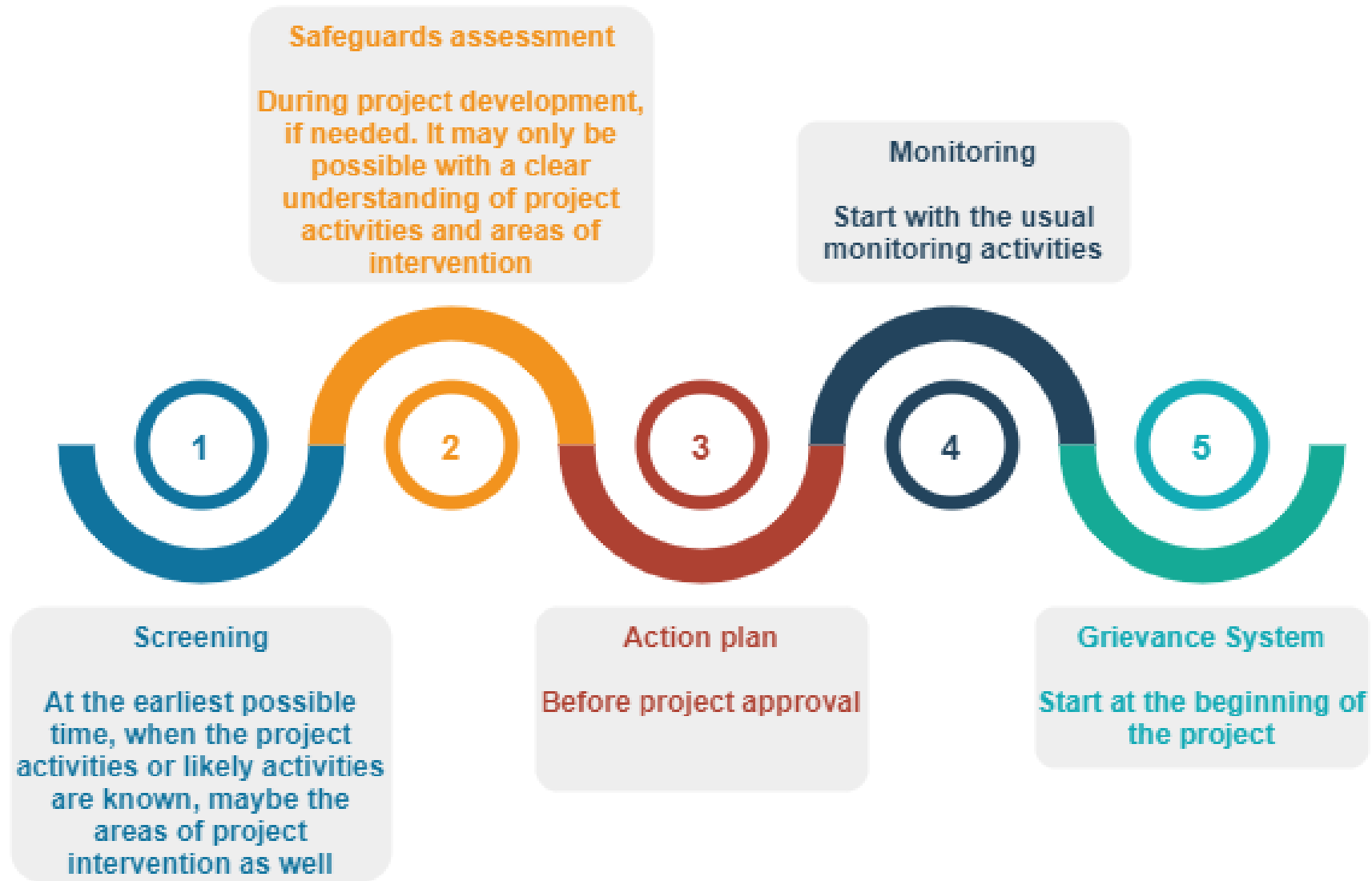
## Main Tools:

IFC specific guides and publications for each of these items  
Funbio's operating procedures going beyond IFC in some respects or adapting to Brazilian law  
Pre-selected consultants for each of these aspects

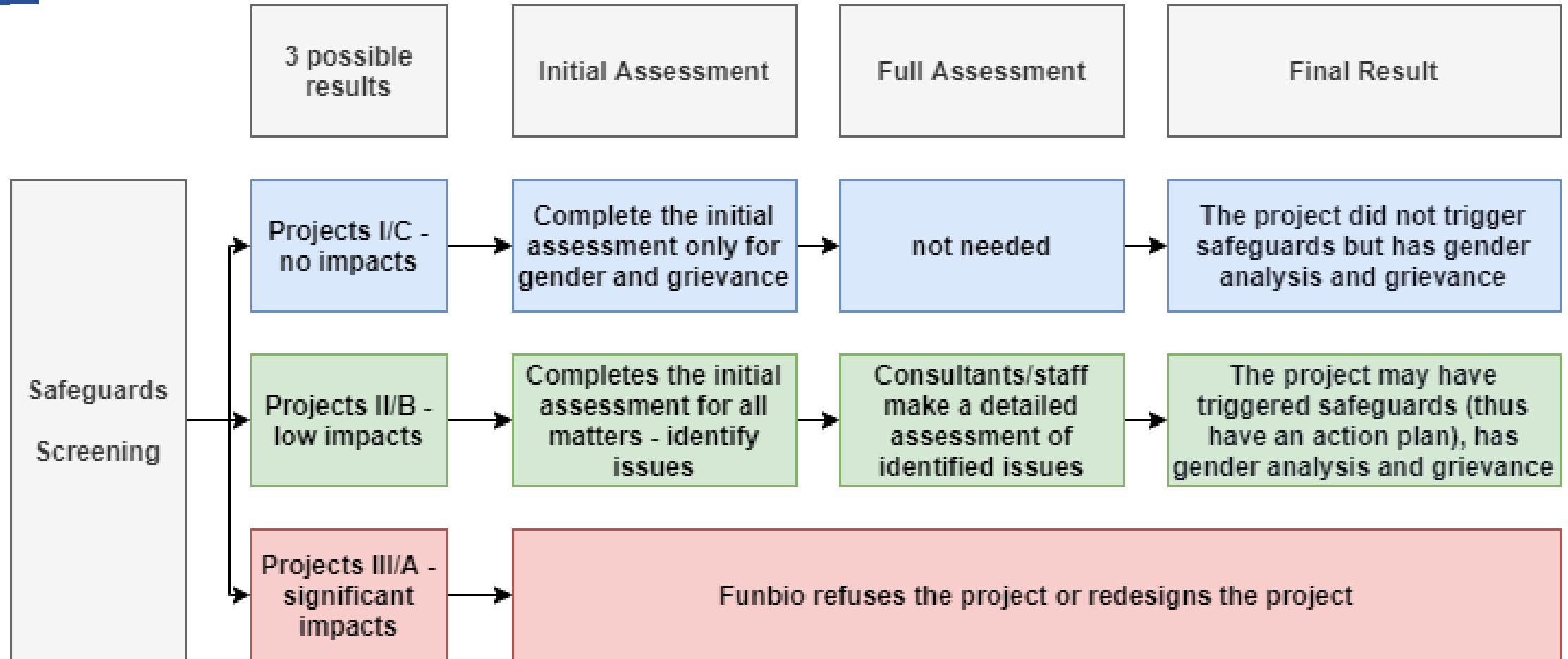
# Safeguards process



# When we use it



# Screening and Assessment possibilities



# Monitoring

## **Always:**

- Whenever any complaints about safeguards are made to Funbio through the grievance system or through the Ethics Committee (and this is monitored by the Internal Auditor)

## **Every six months:**

- Project Technical Report - has a section on the progress of safeguard activities
- Safeguards Monitoring Questionnaire
- Grievance system report on project Reports (are the channels live? Are there any complaint?)
- Supervision missions (in-person meetings of project monitoring) has a session on safeguards

## **Midterm and at the end of the project execution**

- Project Mid-Term Review - has an independent project assessment, including safeguards
- Final Project Evaluation - has an independent project evaluation, including safeguards



# Tools



	Take a look at
Screening	<ul style="list-style-type: none"><li>- Annex I: Part A of GCF SAP Concept Note -&gt; this is a good screening example (<a href="https://www.greenclimate.fund/sites/default/files/document/sap-concept-note.docx">https://www.greenclimate.fund/sites/default/files/document/sap-concept-note.docx</a>)</li></ul>
Assessment	<p>Annex I: Part B of GCF SAP Concept Note -&gt; this is a good guideline for the “big questions” that needed to be made for a Project in an initial assessment. (<a href="https://www.greenclimate.fund/sites/default/files/document/sap-concept-note.docx">https://www.greenclimate.fund/sites/default/files/document/sap-concept-note.docx</a>)</p>
Monitoring	<ul style="list-style-type: none"><li>- Use your current monitoring system/report, just add the safeguards indicators and have a specific field to report on safeguards on your form. Your safeguards focal point should assess the reports</li></ul>
Grievance System	<ul style="list-style-type: none"><li>- Communication path (link in the website, a phone number, WhatsApp, e-mail...) that goes directly to your grievance staff</li><li>- A grievance procedure/policy to address the issues</li><li>- Communicate to stakeholders the existence of a grievance system</li></ul>

**Fábio Leite**  
**Coordenador Agência GEF e GCF**  
**[fabio.leite@funbio.org.br](mailto:fabio.leite@funbio.org.br)**

**20**  
**21**